

WIRELESS CCTV

SUPPORT GUIDE: Using a V4 High Definition Mini Dome



Originated by:
Connor Halpin
Support Co-ordinator

Validated by:
Jon Coluccio
Operations Manager

Date: 02/10/2018
Tel: 877 805-9475
Email: USAsupport@wcctv.com

Wireless CCTV LLC
866 Presidential Drive,
Suite 406, Richardson,
TX 75081

Table of Contents:

1. How to Install Your WCCTV Software	3
2. How to Add Your Camera's IP Address to the Software	4
3. Setting Date & Time	6
4. Setting Camera Presets	7
5. Setting Tours	11
6. Setting Resolution	13
8. Connecting Via Wi-Fi (Windows 7 Onwards)	16
9. How to Wi-Fi into a Dome Camera on Windows XP	21
10. PTZ Control	24
11. How to Download Footage Using Site Archive (Remotely)	25
Evaluation with Optimal Speed	25
12. Downloading Footage via Wi-Fi	27
Using Evaluation with Optimal Functionality on Site Archive	27
13. How to Access Footage Using PC Archive (Reviewing Footage)	29
14. Adding Secondary Camera	32
Secondary PTZ	32
15. Adding LPR	33
16. Analytics	34
17. Email Alerts	35
18. Advanced Analytics	36
Continuous and Event Recording Set up	36
Setting Zones	39
Calibration	40
Email Alerts	42
Alarming Back To Static IP	43

1. How to Install Your WCCTV Software

To install the WCCTV Single view software Using CD-ROM

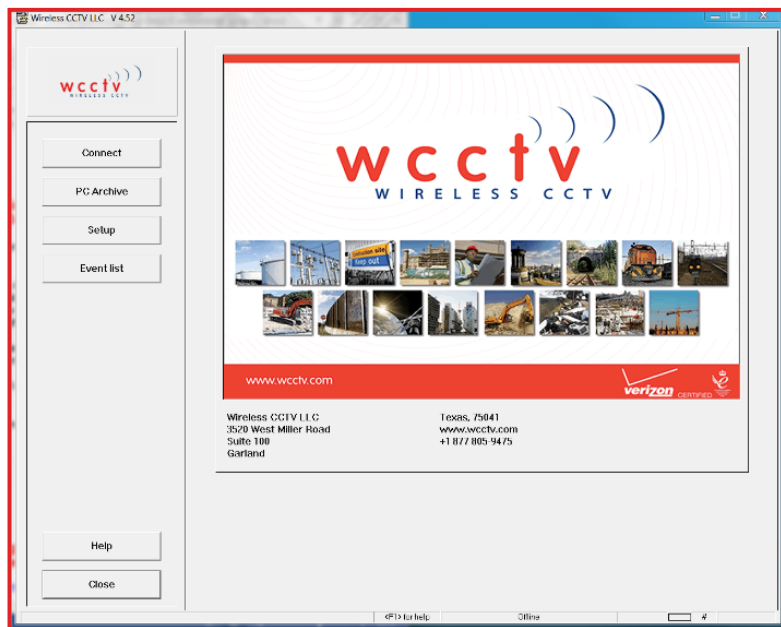
Using the CD-ROM, please insert this into your laptop or desktop pc.

The disk will automatically load, and will present you with the options available. Choose the WCCTV Single View Software or Cam Control Pro Software icon to start installation.

Follow the on screen prompts, as there is no need to input any further information.

Once installed, open the WCCTV Software

Your WCCTV Software is now installed and ready to use.



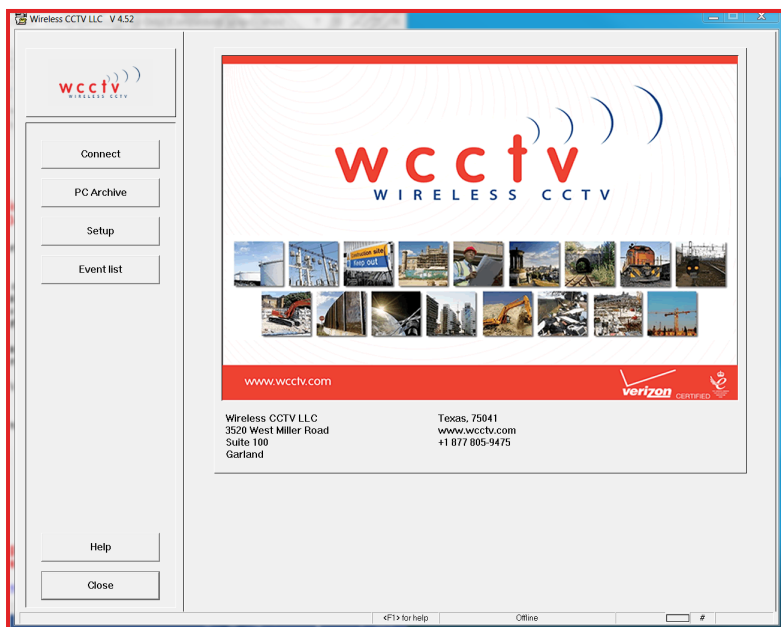
To install the WCCTV Single view software from our website

<https://www.wcctv.com/single-view-software/> (For full software details)

Alternatively click the below image to commence the download

[Download WCCTV Single View Software here](#)

You should then follow the onscreen instructions



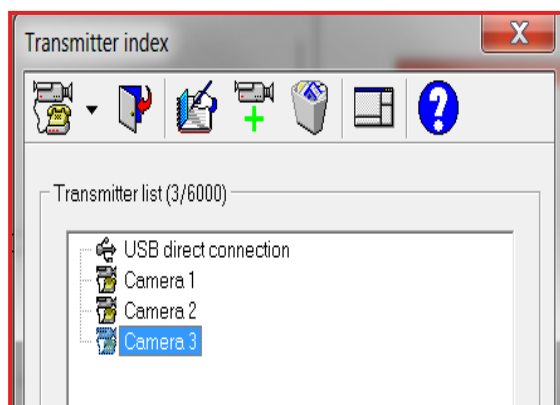
2. How to Add Your Camera's IP Address to the Software

You will find the Mini-domes IP address within the dispatch notes supplied with the camera - alternatively please email WCCTV at support@wcctv.com to request the IP address.

Open your WCCTV viewing software

Select 'Dial' from the menu, this will bring up your transmitter index

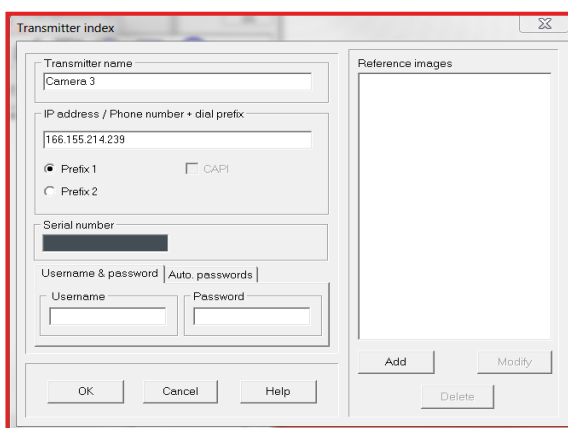
Select 'Add' and then 'Add new transmitter'



In 'Transmitter Name' choose a name for your camera

In 'IP address/Phone Number' please enter your cameras static or public IP address.

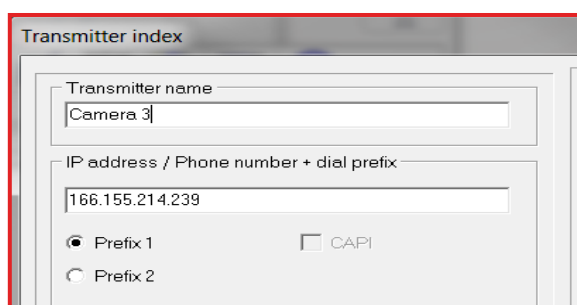
Select 'OK' to save the cameras IP address



You will need to repeat this for each IP address you have for each piece of equipment.

Highlight your camera in the 'Transmitter Index'

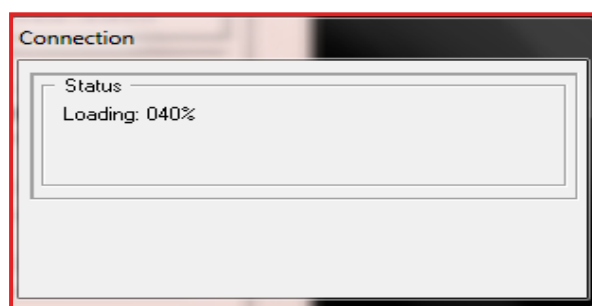
Select 'Dial'



Once dialed if successful you will see

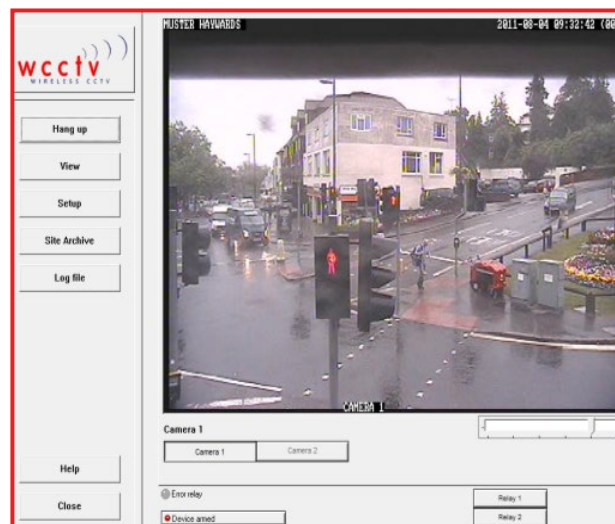
Status

Loading %



Once the connection is established you will be able to view the live image of your camera

If you need to disconnect from the camera, select 'Hang up'.



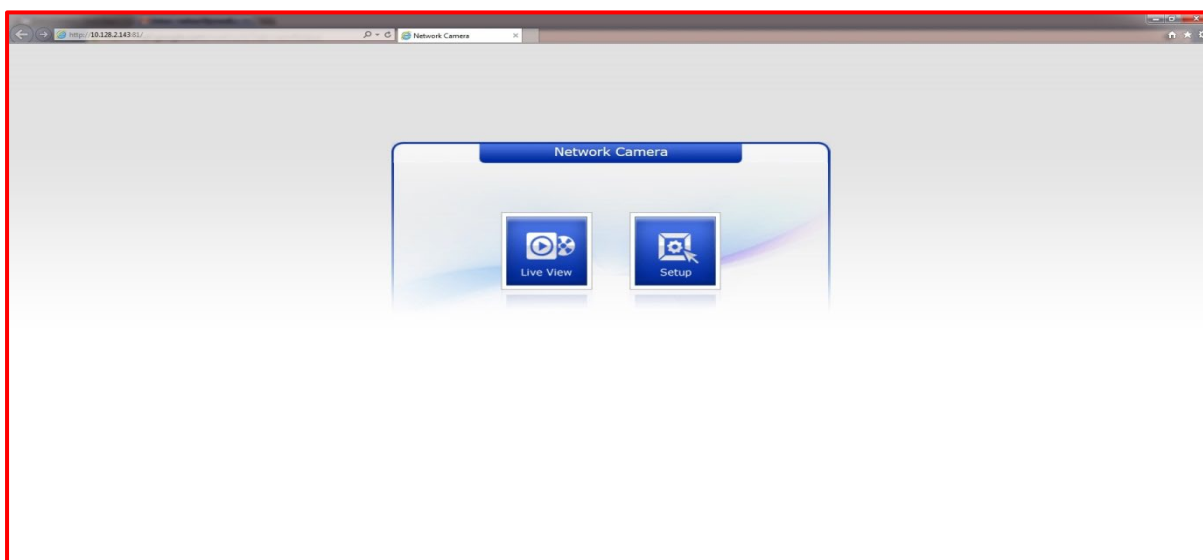
Once you have successfully connected to the camera you will need to open up Internet Explorer

This is to allow you to edit camera pre-sets, set tours, and change the resolution settings as well as many more options.

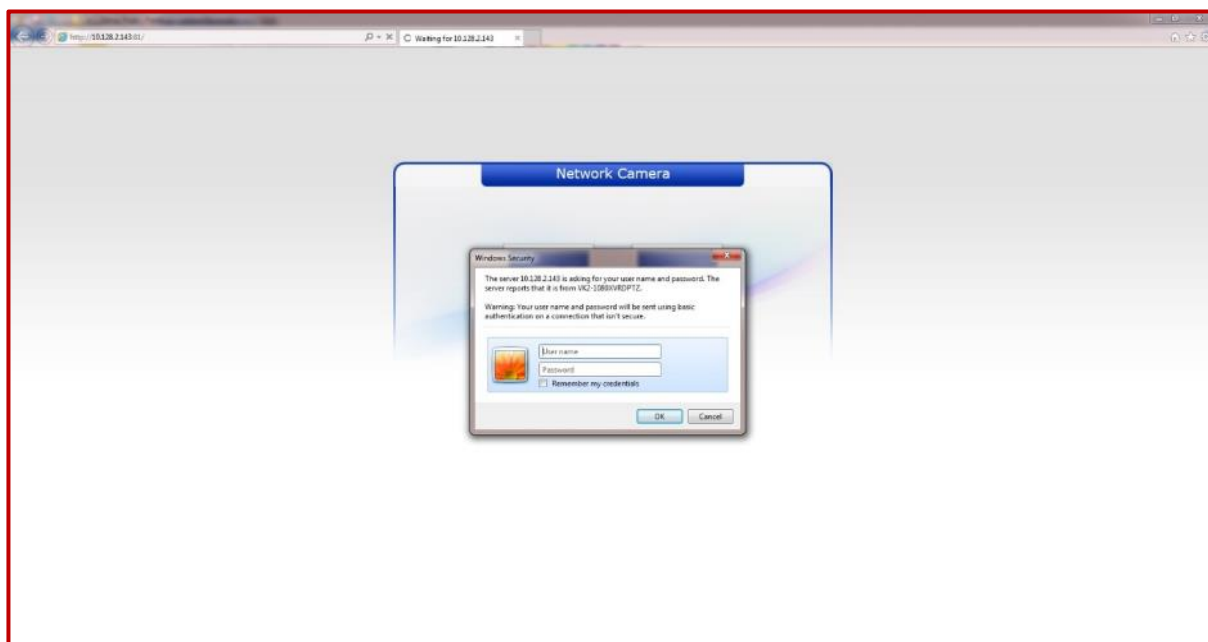
Once you have opened internet explorer you will need to enter http:// followed by the IP Address of your camera followed by :81

e.g. <https://166.155.214.243:81/>

If you **click** setup it will allow access to the camera settings...

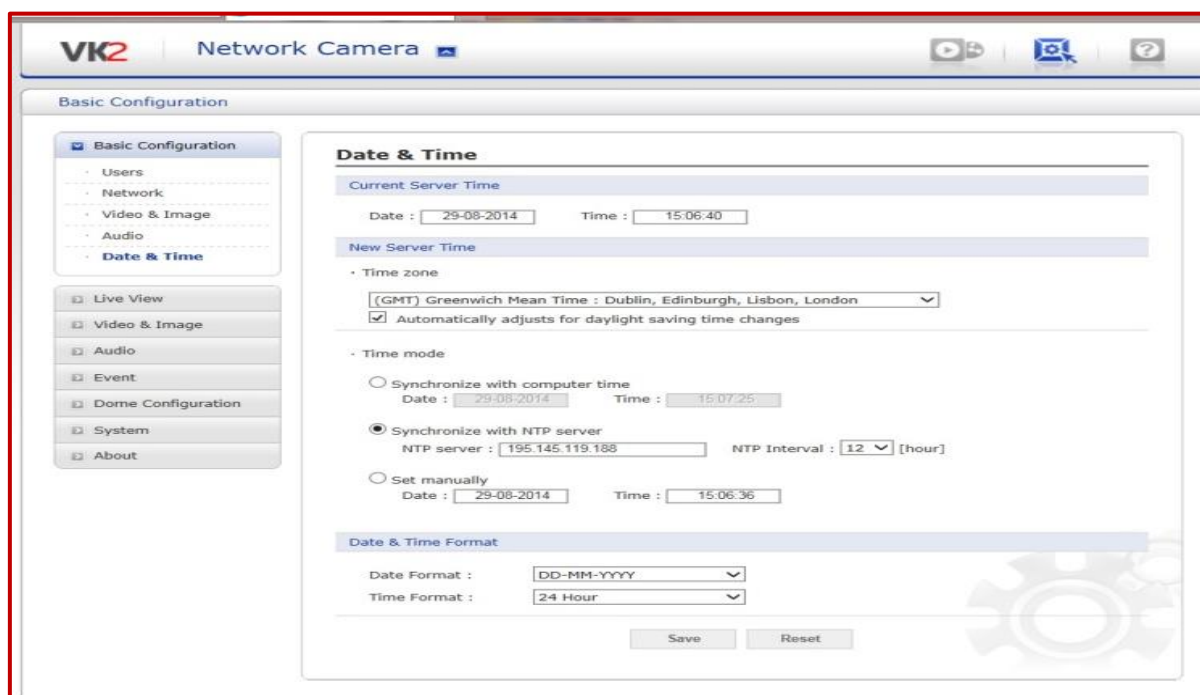


You will need to enter the username (admin) and password (r0chdale)



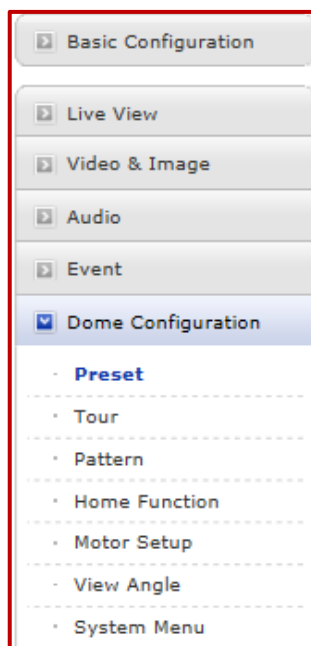
3. Setting Date & Time

Date & time can be found under the basic configuration menu. The 3 different settings that can be used are set to computer time, NTP server timer, or enter manually.

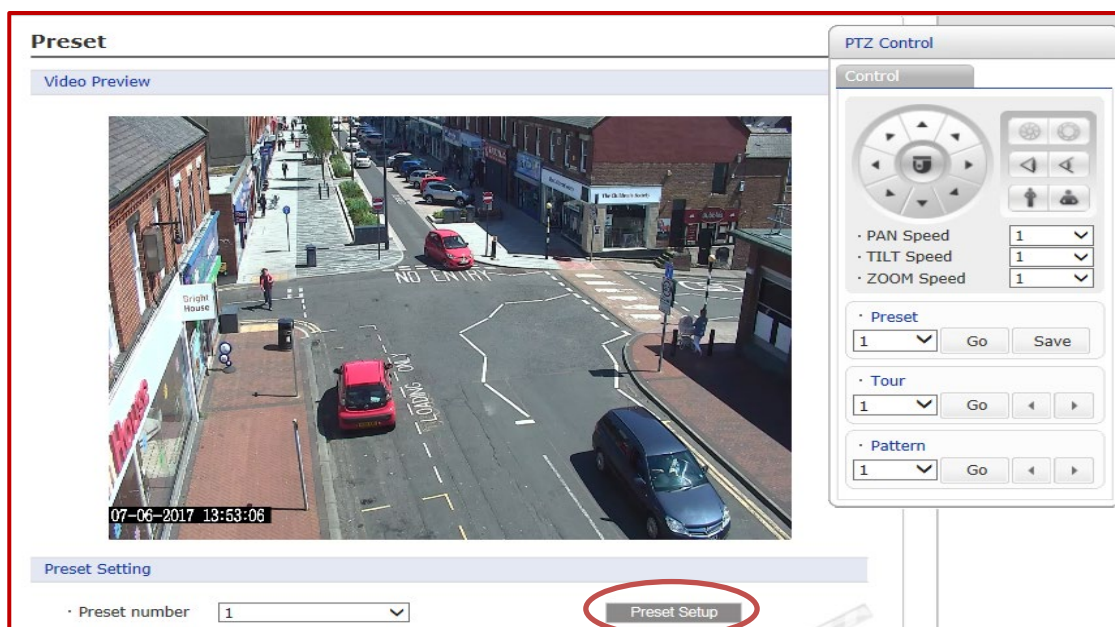


4. Setting Camera Presets

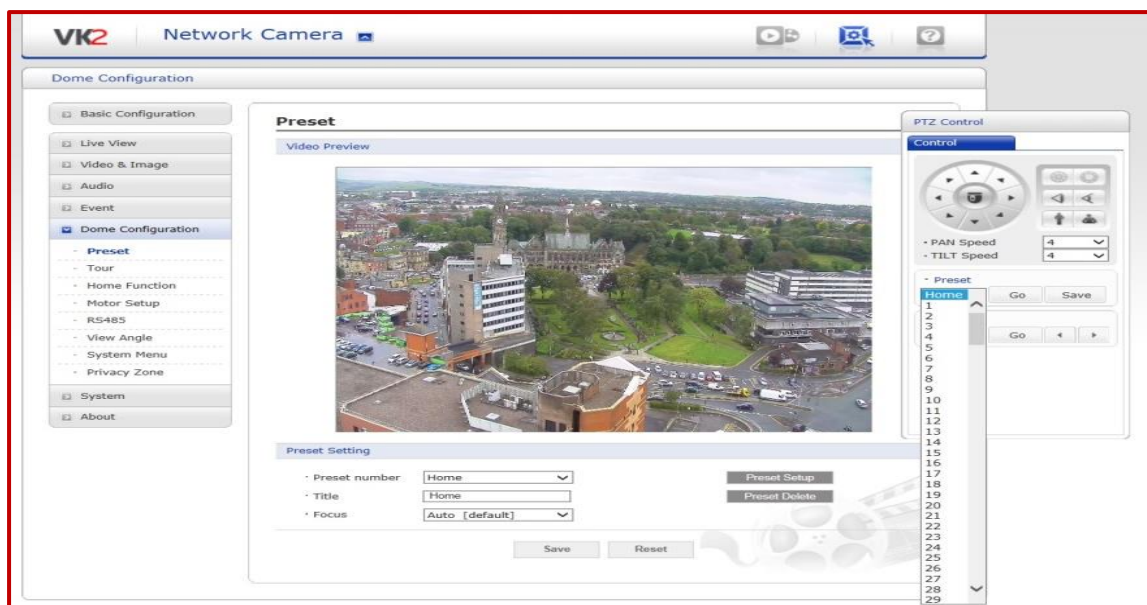
This setting can be found under Dome Configuration...



Then select Pre-set Setup...



Now select the pre-set home or number you would like to edit on the right hand side and move the live image to the position you want, set the pan and tilt speed, then click save...



Repeat this process for the desired number of pre-sets needed. The maximum is 16.

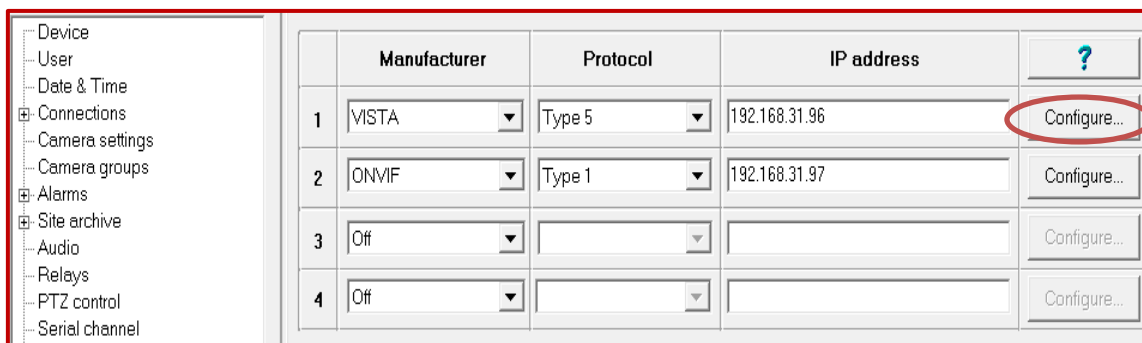
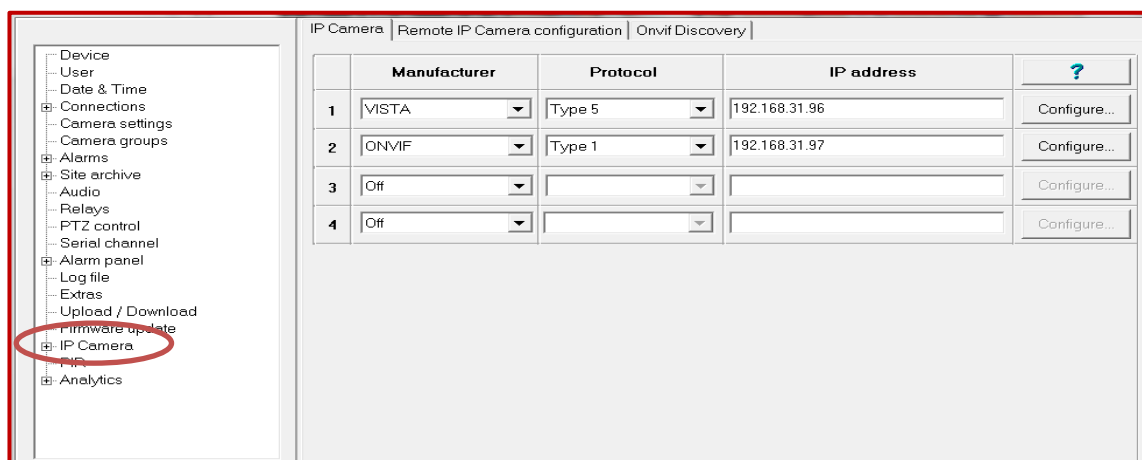
In order to view the pre-sets within the WCCTV Software you will need to open the software and dial into the camera...



Once dialed in you will then need to click setup...



Select IP Camera from the list...



Then click configure...

Then select the required of presets from the drop down box and click OK then OK again...

Now check the save as configuration profile box and click OK...

Configure

VISTA / Type 5

User: admin Password: [REDACTED]

Number of Presets: Off Motion Server Port: 7777 ?

Video format stream 1: H264 [01] Video format stream 2: JPEG [01] Video format stream 3: -

Info

Live stream: Stream 2 Site archive stream: Stream 1 Analytics stream: Stream 2

Browser stream: Stream 2 Web Api stream (MultiView): Stream 2

Configure with Browser

OK Cancel

Save Recorder Settings ?

Do you really want to save the new settings?

☒ Save as configuration profile

☐ Load configuration profile

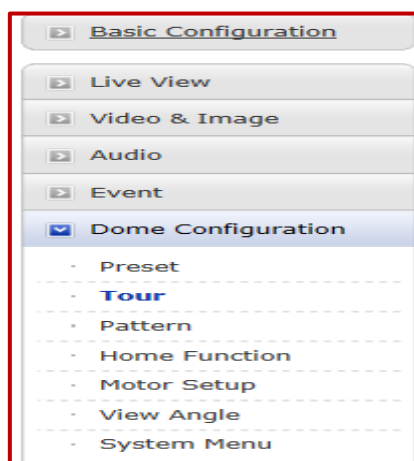
OK Cancel

The preset box will now be displayed...



5. Setting Tours

Setting a tour can be found under the dome configuration section of the menu...



Then click on Tour Position Setup to display the following...

Control

• PAN Speed 1 ▾
 • TILT Speed 1 ▾
 • ZOOM Speed 1 ▾

• Preset
 1 ▾

• Tour
 1 ▾

• Pattern
 1 ▾

To delete the tour go to Home Function in the Dome Configuration section and change function none

Dome Configuration

Basic Configuration

Live View

Video & Image

Audio

Event

Dome Configuration

• Preset

• Tour

• Pattern

• Home Function

Home Function

Home Function Setting

• Function

Tour

• Function No.

• Waiting Time

60 [default]

sec

• Function Use

On

* Camera goes to assigned function if there is no PTZ action during "Waiting Time".

Save

Reset

Now go to tour in the Dome Configuration section. Delete each individual position by clicking on 1 then delete position. Complete these steps for all positions and click save at the bottom. The tour will then be deleted.

6. Setting Resolution

The screenshot shows the Dome Configuration web interface. On the left is a sidebar menu with options: Home Function, Motor Setup, View Angle, System Menu, Privacy Zone, System, and About. The main area is divided into two sections: Tour Setting and Tour Position Setup. The Tour Setting section includes fields for Tour Number (1), Title (Tour 1), Repeat (Continuous [default]), and Sequence (Forward [default]), with buttons for Delete Tour and Tour Position Setup. The Tour Position Setup section includes fields for Tour position (002), Preset number, Dwell Time (10 [default] sec), and Speed (Pan 92 [def], Tilt 32 [def], Zoom 7 [def]), with buttons for Delete Position and Set Position. Below these fields is a large table with 10 columns and 10 rows, where the first cell contains '003'. At the bottom of the main area are Save and Reset buttons. On the right side of the interface, there are additional controls for Tour and Pattern, each with a dropdown menu (set to 1), Go, and Save buttons.

Resolution can be found on Basic Configuration then click Video & Image...

The screenshot shows a dropdown menu for Basic Configuration. The menu items are: Users, Network, Video & Image (highlighted in blue), Audio, and Date & Time.

The resolution can then be changed as required here...

Video & Image

Sensor Setting

Capture mode: 1920x1080 Max. 25fps

Stream 1 Setting

Codec: H.264 Baseline Profile

Resolution: 1280x720

Bitrate control: ☒ VBR ☐ CVBR

Bitrate: 4000 [Kbps]

Framerate: 25

GOP size: 25 [1 ...50]

Stream 2 Setting

Codec: MJPEG

Resolution: 704x576

Framerate: 25

Quality: [Slider]

Stream 3 Setting

Codec: H.264 Baseline Profile

Resolution: 320x240

Bitrate control: ☐ VBR ☒ CVBR

Bitrate: 1000 [Kbps]

Framerate: 6

GOP size: 6 [1 ...12]

Save

Stream 1 Setting – (Archived Footage)

Frame Rate can be adjusted from 25 frames per second to 10 frames per second to increase the length of time the footage is stored on the Hard Drive.

Stream 2 Settings – (Live Playback)

Resolution can be adjusted depending on requirements.

Quality can be adjusted if required

Please note if the resolution is set to high then less days will be recorded to the site archive. Also the camera is configured to stream 2.

7. Setting Home Position

Setting the home position can be set under the dome configuration menu, then click Home Function. At this point you have a choice to set as either Preset or Tour

To set Home Function as a Preset - select Function as Preset from Drop down...

Then select Function No and choose preset from list (see below)

• Function: Preset

• Function No.: Preset, None, Preset 1, Preset 2, Preset 3, Preset 4, Preset 6

• Waiting Time:

• Function Use:

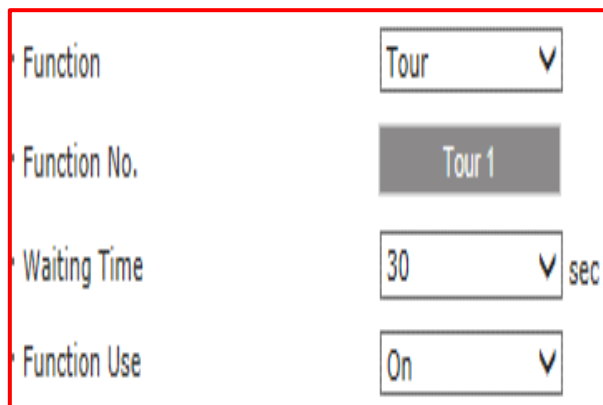
* Camera goes to assigned function

Then select Waiting Time and select a time from 10 up to 600 seconds, this is the length of PTZ inactivity required for the Home function to activate

Finally select Function Use and select on and select Save

To set Home Function as a Tour select Function as Tour from Drop down...

Then select Function No and choose Tour from list (see below)



Function	Tour	▼
Function No.	Tour 1	
Waiting Time	30	▼ sec
Function Use	On	▼

Then select Waiting Time and select a time from 10 up to 600 seconds, this is the length of PTZ inactivity required for the Home function to activate.

Finally select Function Use and select on and select Save.

8. Connecting Via Wi-Fi (Windows 7 Onwards)

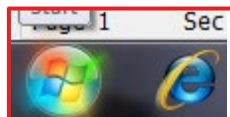
How to Wi-Fi into a Dome Camera on Windows 7

To download a large amount of footage, it's always best to download it over Wi-Fi as 4G will take a lengthy amount of time to download anything more than 10-20 minutes' worth of footage.

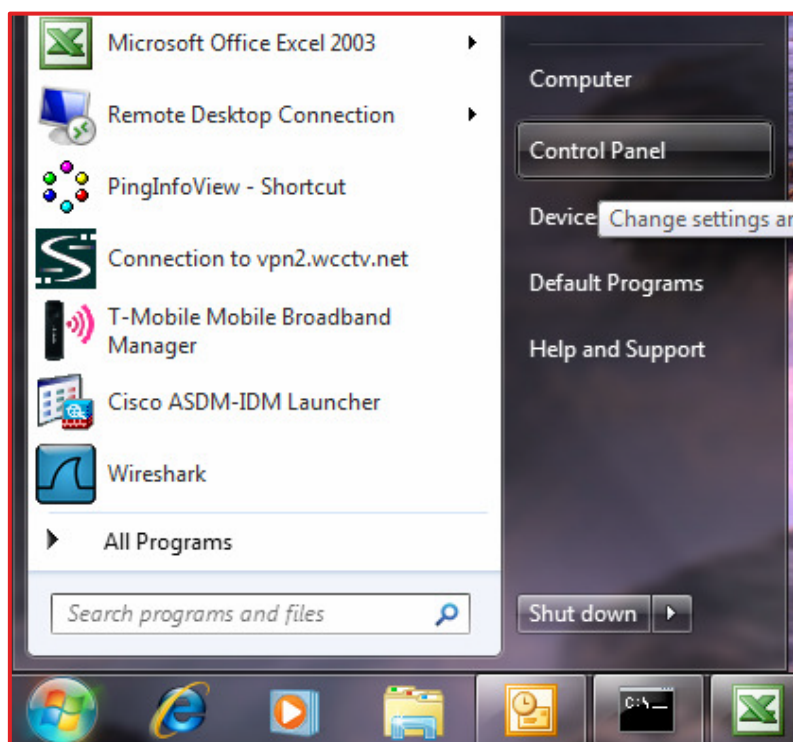
Firstly you will need to make sure you have the correct TCP/IP settings on your laptop.

Windows 7

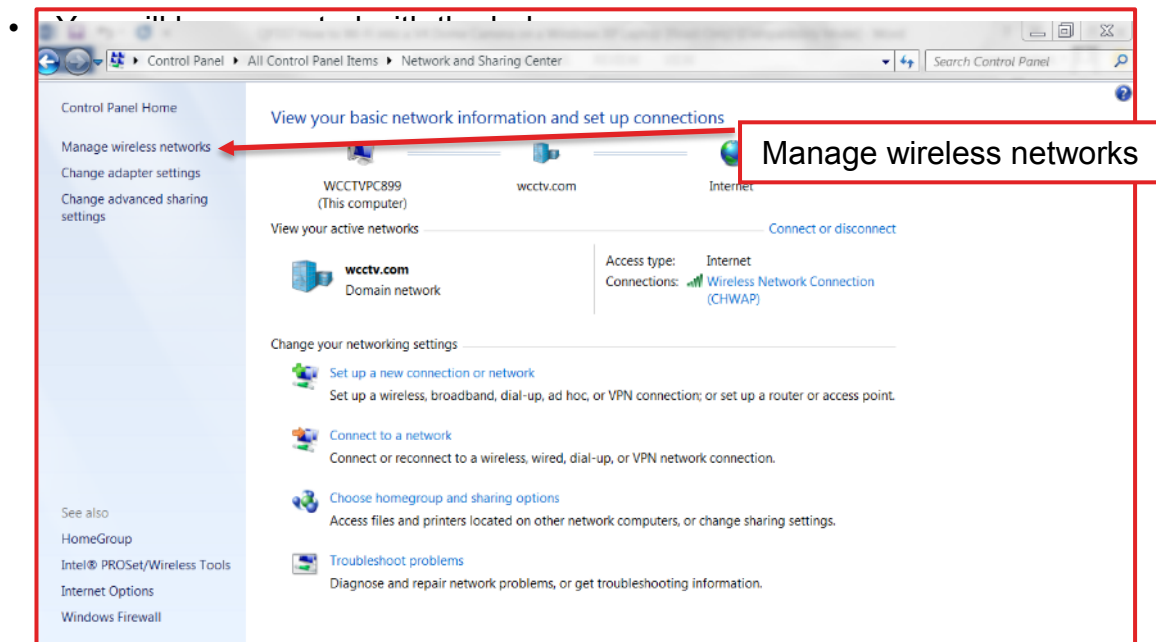
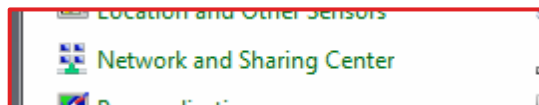
- Select 'Start'



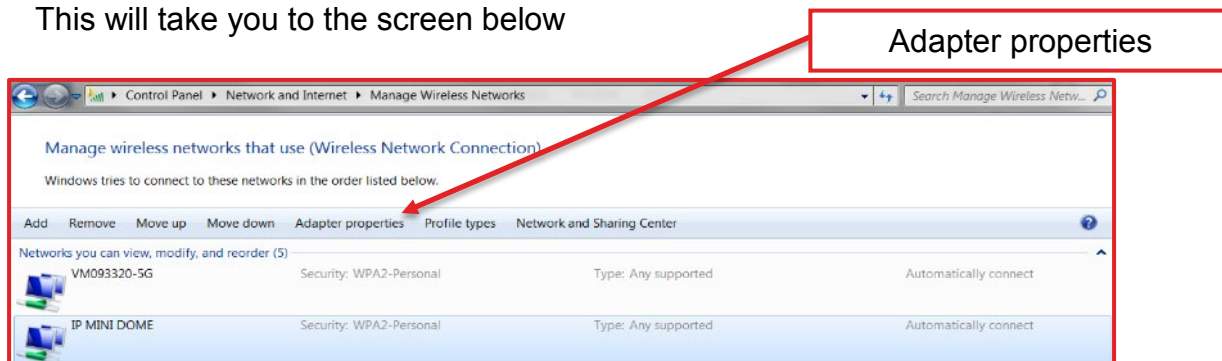
- Select 'Control Panel'



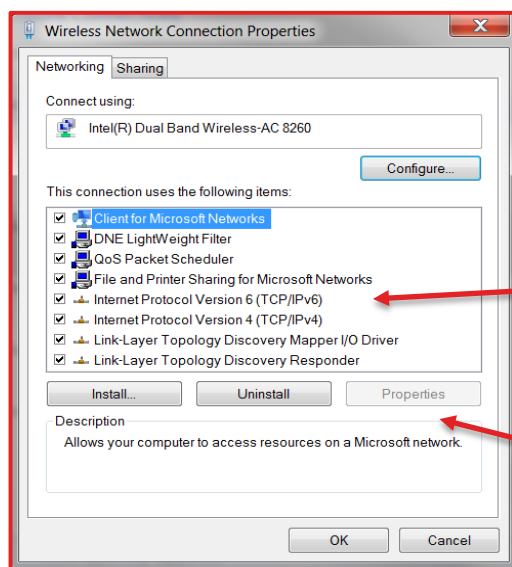
- When in 'Control Panel' select 'Network and Sharing Centre'.



- Select 'Manage wireless networks'.
- This will take you to the screen below



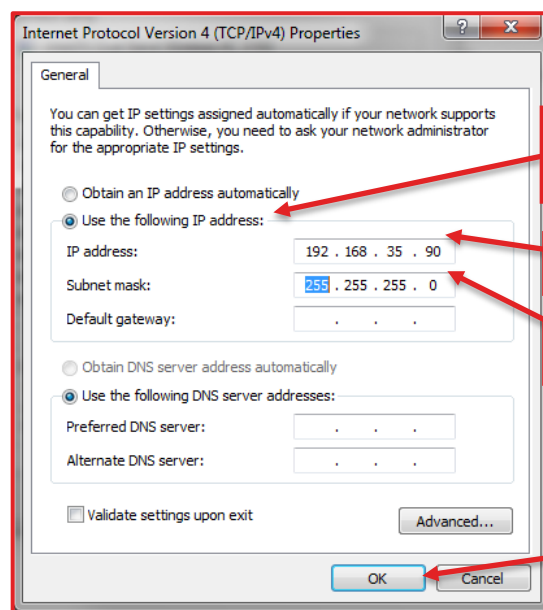
- Select 'Adapter Properties'
- Then select '**Internet Protocol Version 4 (TCP/IPv4)**'



Internet Protocol Version 4 (TCP/IPv4)

Properties

- Select '**properties**'



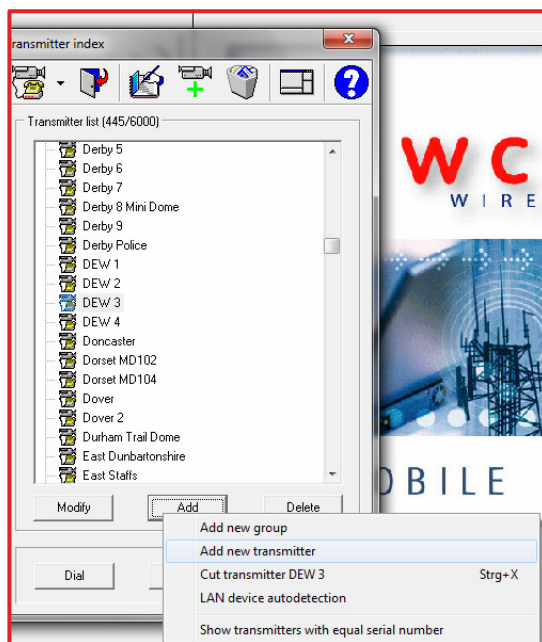
Using the following IP address

IP address

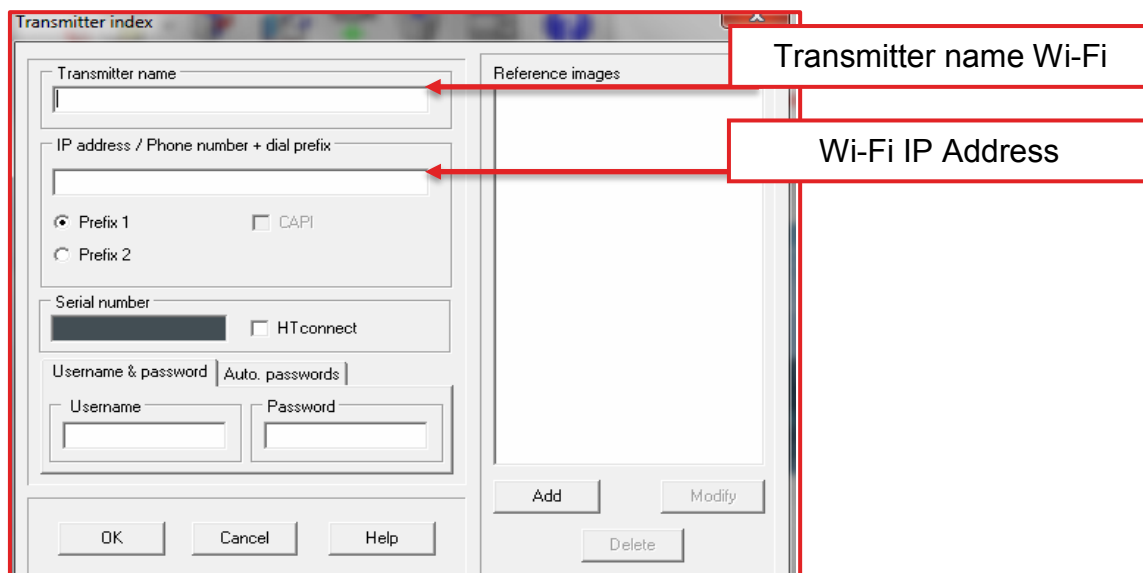
Subnet mask

OK

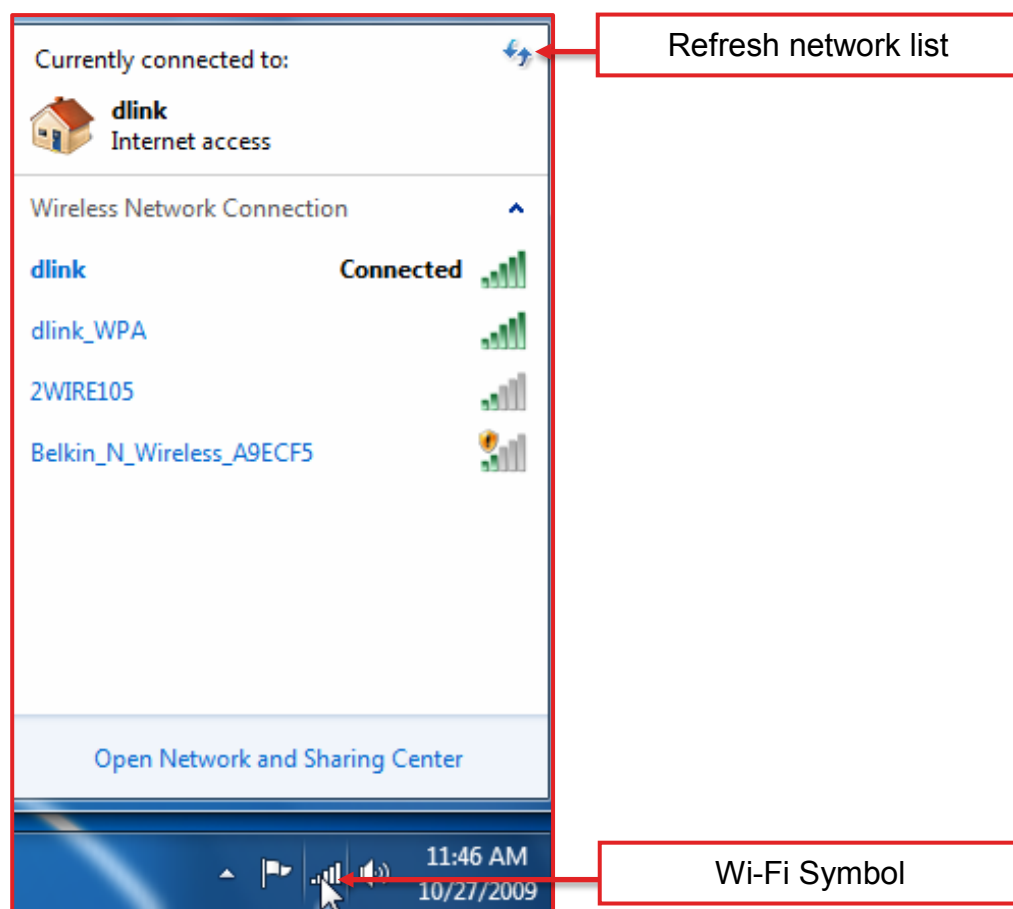
- Select '**Use the following IP address**'
- In the IP address field input '**192.168.35.90**'
- Select the '**Tab**' key on your keyboard located above '**Caps Lock**'.
- This will automatically input the '**Subnet Mask**' for you.
- Select '**OK**' and close the '**Control Panel**' down.
- Once you have done this, you will need to add the Wi-Fi IP address to your WCCTV Viewing Software.
- Open your WCCTV Viewing Software and select '**Dial**'.



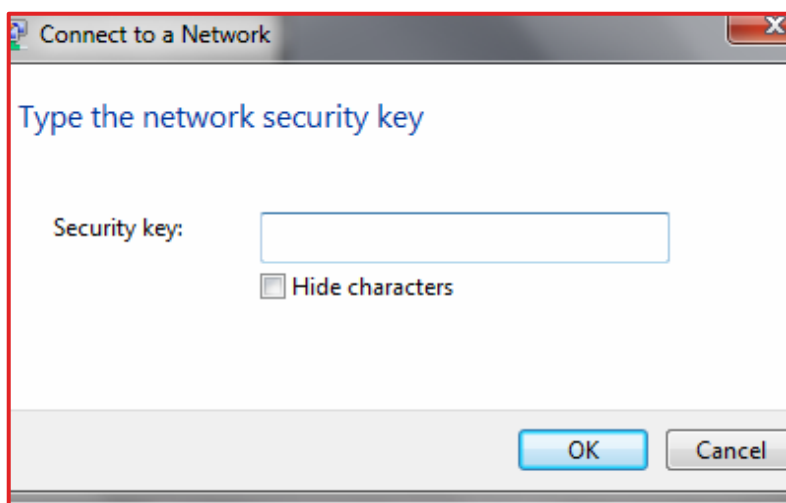
Select '**Add**' then '**Add new transmitter**'



- Input the information included above, and then select '**OK**'.
- The final step is to connect to the domes Wi-Fi.
- You will need to select your Wi-Fi symbol, located in the bottom right hand corner of the desktop.



- You will be presented with the above screen.
- Here you will need to refresh the '**Network List**'.
- Locate your domes Wi-Fi name, this can be located on the dispatch note that came with your equipment.
- Double click on the domes Wi-Fi name, it should ask you for a '**Security Key**'



- The security key will be **51e2627301**

- It may ask you to input the security key twice; this is to confirm you have the correct Wi-Fi key.
- Select '**OK**' and you should connect to your dome's Wi-Fi.
- Once connected, open your WCCTV Viewing Software.
- Select '**Dial**', then select your '**Wi-Fi**' IP (192.168.35.95) name.
- Double click this and you should then be connected straight in to your dome camera.
- If you do not have your Wi-Fi IP added to your WCCTV Viewing Software, please refer back to '**How to add your IP address to the WCCTV Viewing Software**'. The IP you will need to add is **192.168.35.95**

9. How to Wi-Fi into a Dome Camera on Windows XP

To download a large amount of footage, it's always best to download it over Wi-Fi as 4G will take a lengthy amount of time to download anything more than 10-20 minutes' worth of footage.

Firstly you will need to make sure you have the correct TCP/IP settings on your laptop

Windows XP

- Select '**Start**'.



- Select '**Control panel**'.



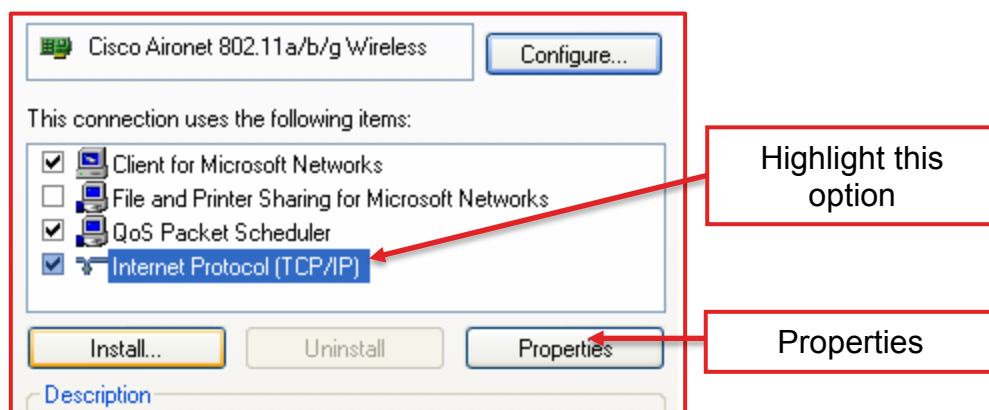
- When control panel loads, you will need to select '**Network Connections**'.



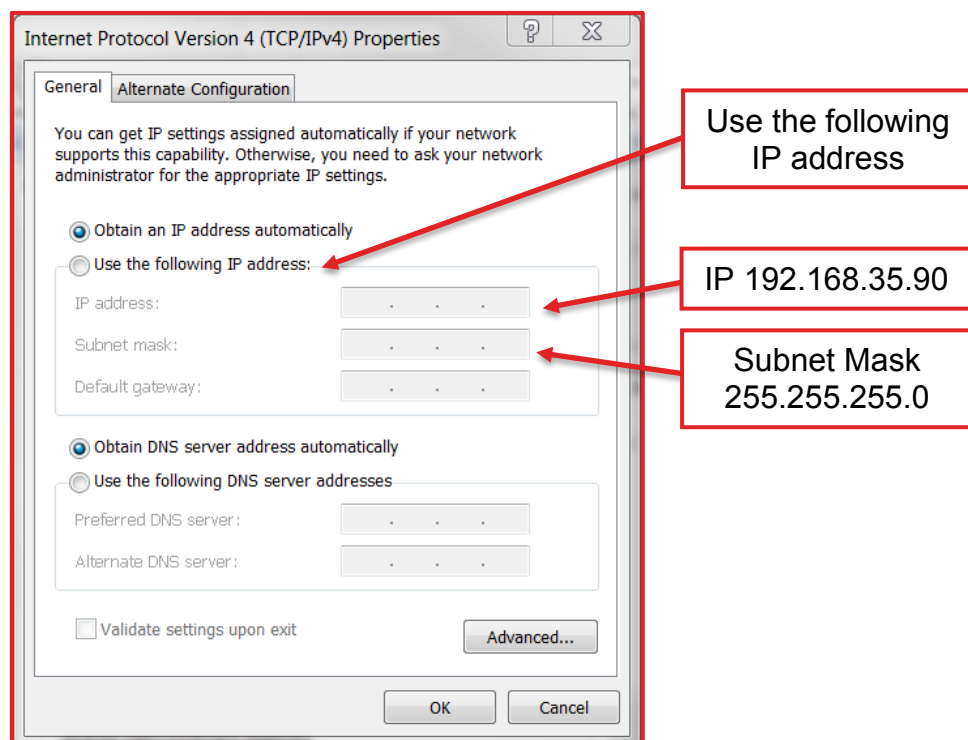
- You will need to locate your '**Wireless Network Connection**'.



- Right click on the **'Wireless Network Connection'** icon and select **'Properties'**. You will be presented with the below screen.

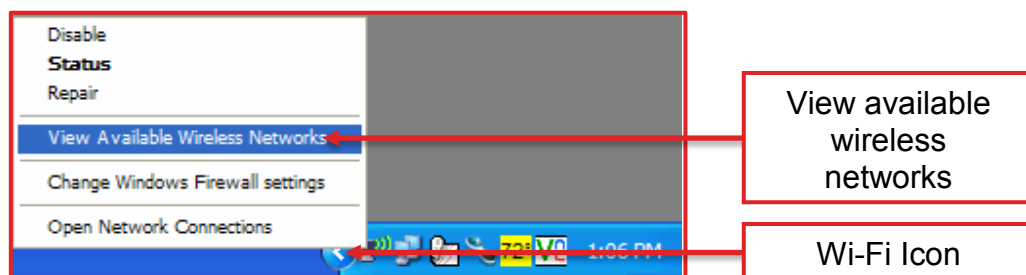


- You will need to highlight **'Internet Protocol TCP/IP'** as shown above.
- Once highlighted select **'Properties'**. You will then be presented with the below screen.

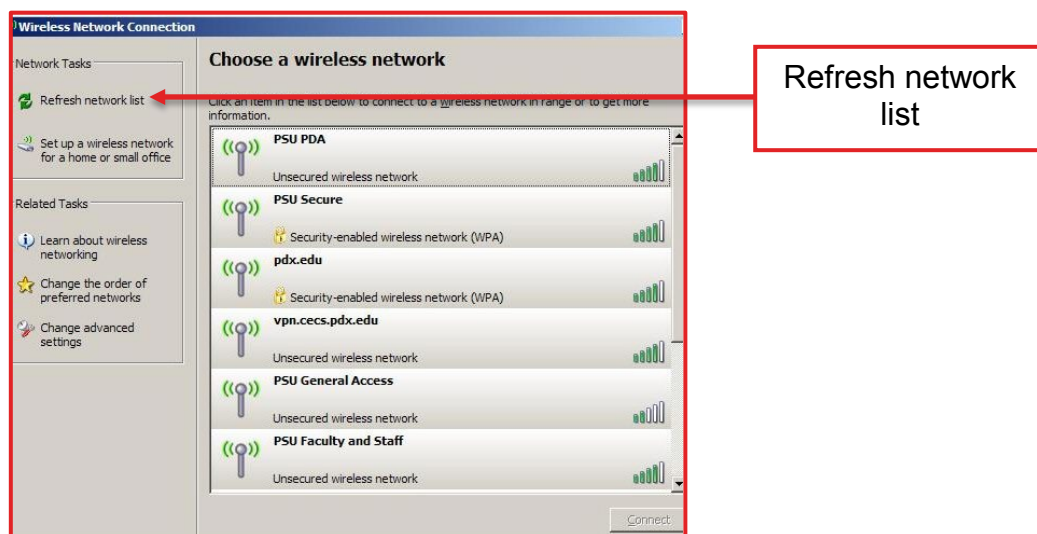


- Select **'Use the following IP address'**. In here you will need to input **'192.168.31.90'**.

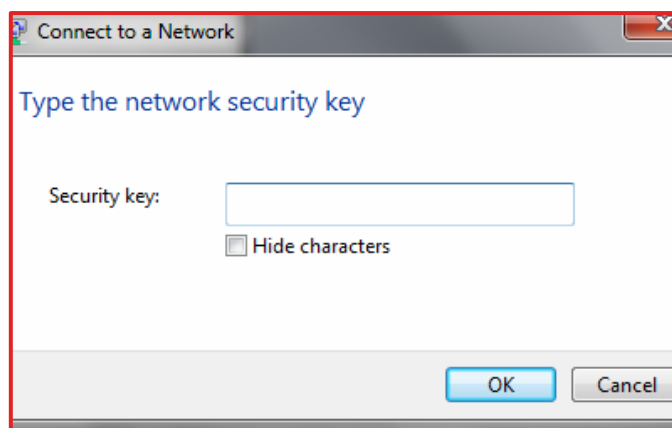
- Use your **'Tab'** key on the keyboard to tab down to the subnet mask box, this will automatically appear in there.
- Once this is completed, select **'OK'**
- The final step is to connect to the domes Wi-Fi.
- You will need to select your Wi-Fi symbol, located in the bottom right hand corner of the desktop.



- Right click the Wi-Fi icon and select **'View Available Wireless Networks'**.
- You will be presented with a list of available Wi-Fi connections like the below image.



- Here you will need to refresh the **'Network List'**.
- Locate your domes Wi-Fi name, this can be located on the dispatch note that came with your equipment.
- Double click on the domes Wi-Fi name, it should ask you for a **'Security Key'**



- The security key will be **51e2627301**
- It may ask you to input the security key twice; this is to confirm you have the correct Wi-Fi key.
- Select '**OK**' and you should connect to your domes Wi-Fi.
- Once connected, open your WCCTV Viewing Software.
- Select '**Dial**', then select your '**Wi-Fi**' IP (192.168.35.95) name.
- Double click this and you should then be connected straight in to your dome camera.
- If you do not have your Wi-Fi IP added to your WCCTV Viewing Software, please refer back to '**How to add your IP address to the WCCTV Viewing Software**'. The IP you will need to add is **192.168.31.95**

10. PTZ Control

- To zoom in and out of the image, place your cursor towards the middle/left hand side of the screen. Here you should be able to see a 'Z+' or 'Z-'. This will allow you to zoom in and zoom out of the image.



11. How to Download Footage Using Site Archive (Remotely)

Evaluation with Optimal Speed

This is used for downloading footage over 4G.

- Select the camera you would like to download footage from, and dial into it.
- Select '**Site Archive**' located on the left hand side of the screen.

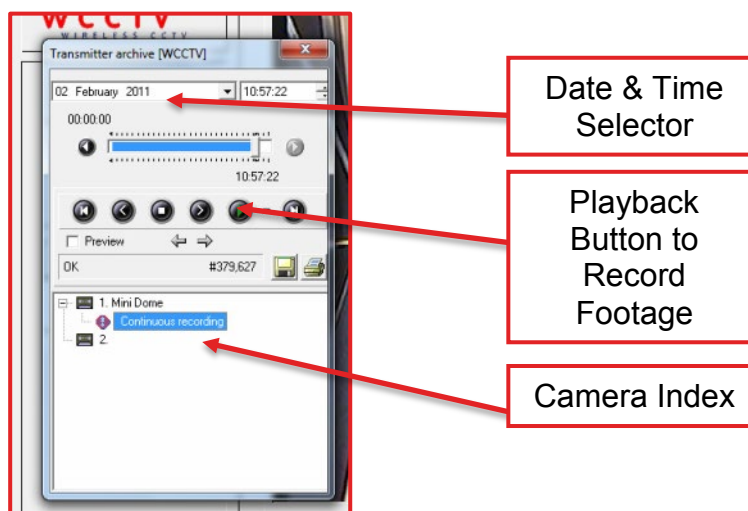


You will be presented with 2 options:

- **Evaluation with Optimal Functionality**-this is needed when you are accessing the camera footage over a Wi-Fi connection (usually when you are right by the camera)
- **Evaluation with Optimal Speed**-this is needed when accessing the camera footage over 4G

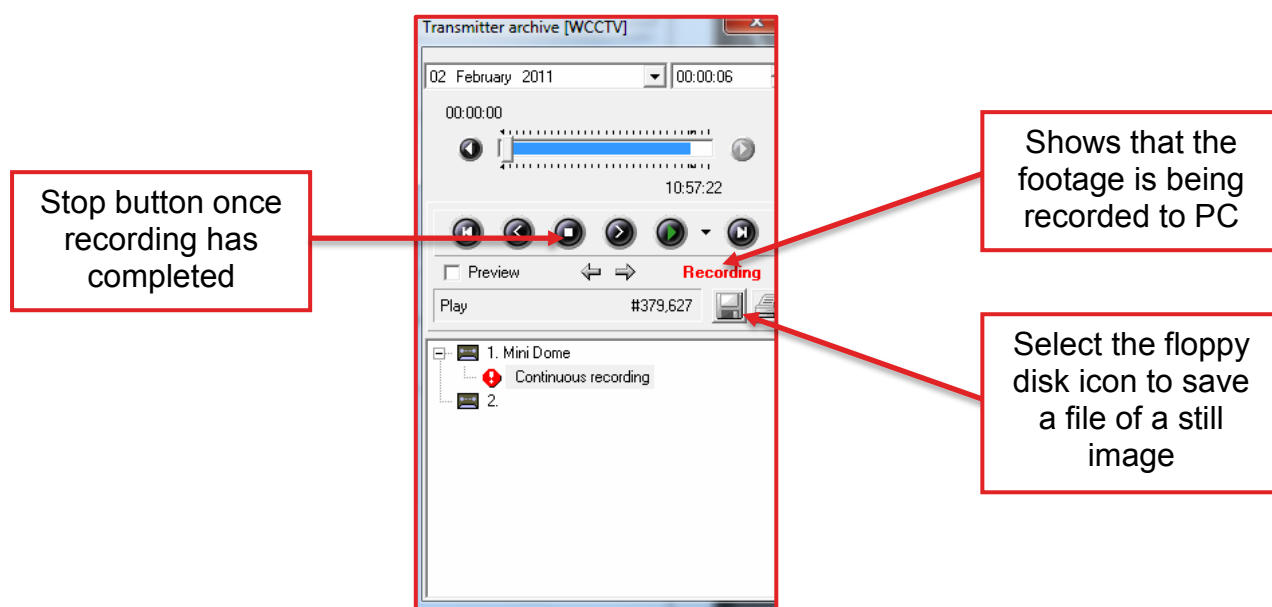
Select '**Evaluation with Optimal Speed**'

A new window will appear named '**Transmitter Archive**'



Select which camera you want to access by clicking on '**Continuous Recording**', and it will then allow you to change the time and date.

- Select the date and time of the footage that you would like to retrieve from the hard drive.
- **Note:** Retrieving footage over 4G will take considerably longer to download. If you're looking to download a large amount of footage, anything over 10-20minutes, it is advised that you should try to connect via Wi-Fi to the camera if possible.
- To commence the download of the footage, you will need to select the green '**Play**' button from the task bar.
- You will see that red text appears- **Recording** (the pictures will advance in slow motion as this is done over 4G)



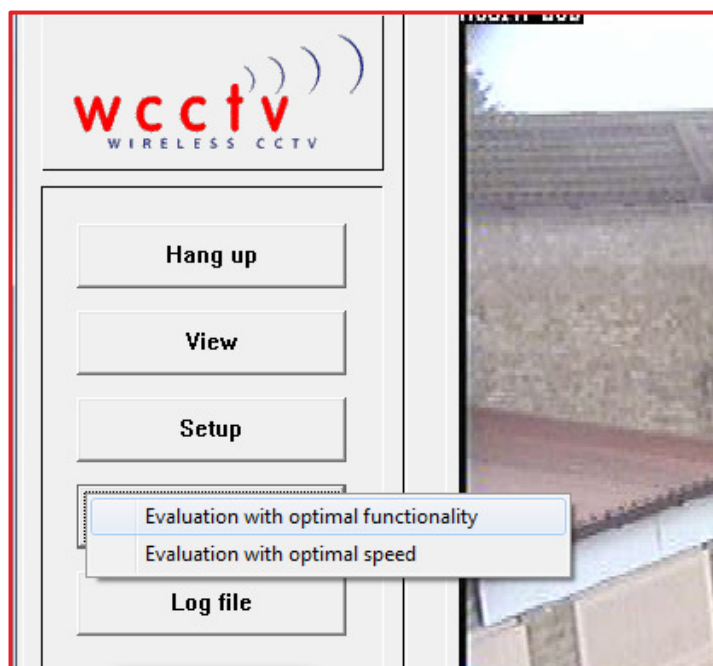
Once you have finished recording, press the '**Stop**' button and recording will cease. To exit the '**Transmitter Index**' click the red '**X**' in the top right hand corner of the box. You are now able to hang up the connection to the camera, so that you are able to access the downloaded footage.

- To save a still image of the footage, you will need to select the '**Floppy Disk**' icon. This will save a copy of the picture in your WCCTV REC file. This is located in your C: Drive in '**My Computer**'. In here you should see WCCTVREC. Within this folder, you should be able to locate another folder called '**Snapshots**'. In here you will find your still images.
- To now export the footage, please see section 26-PC Archive.

12. Downloading Footage via Wi-Fi

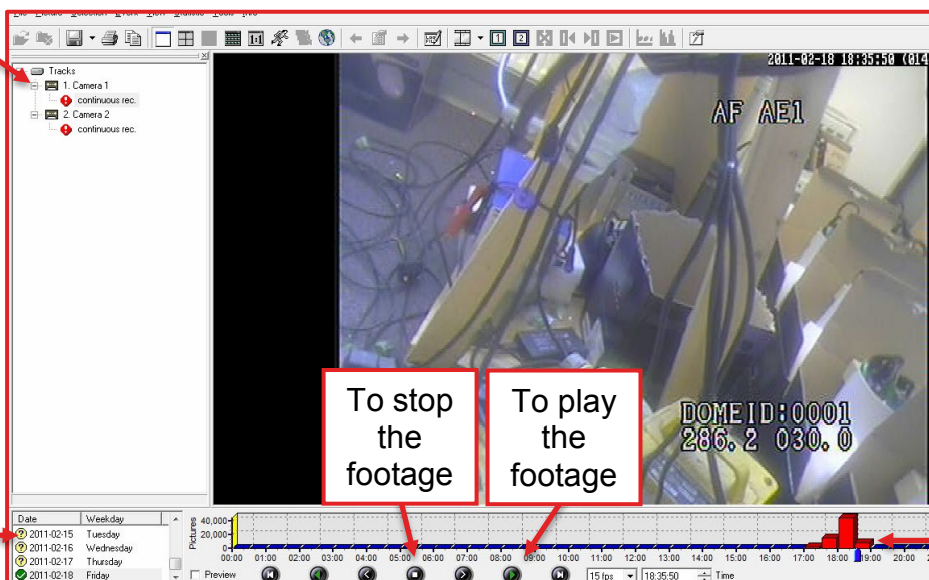
Using Evaluation with Optimal Functionality on Site Archive

When downloading footage over Wi-Fi, you will need to select 'Site Archive', and then 'Evaluation with Optimal Functionality'.



You'll be presented with a screen which looks similar to the screen shot below.

Select camera to view footage from



Select date to view footage from

To stop the footage

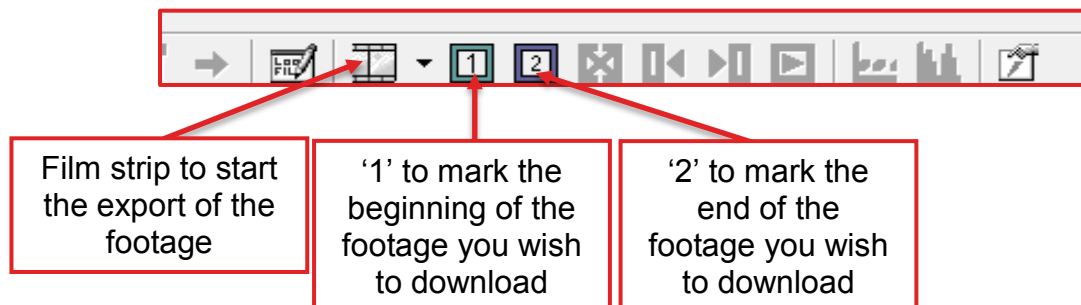
To play the footage

Select time to view footage from

Select the date and time you wish to use.

To download the footage from '**Site Archive**', you will first need to select a beginning point for the footage.

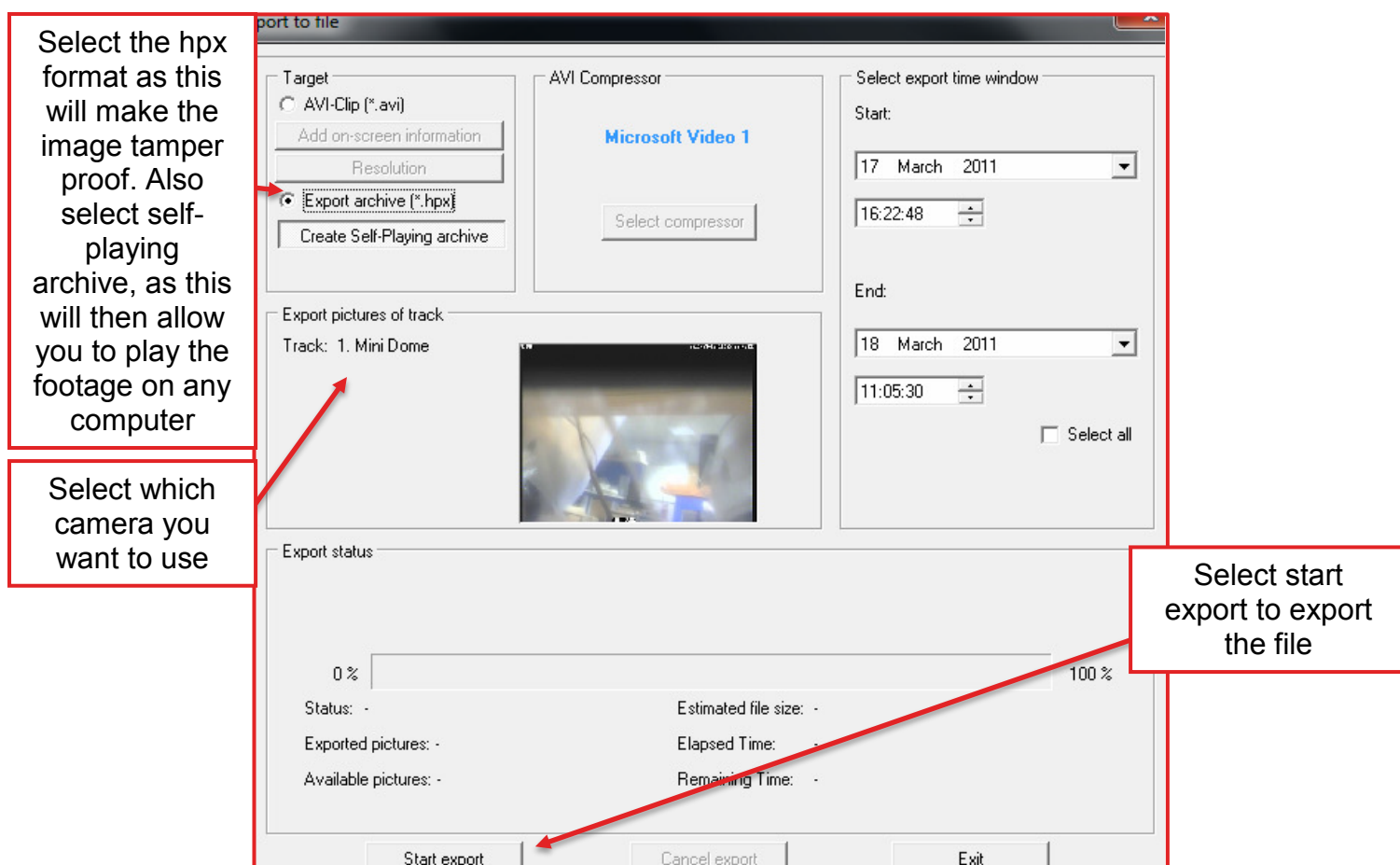
Find your start point, select the number '**1**' from the tool bar located towards the top of the page.



To mark the end of the footage, select the number '**2**' from the tool bar located at the top of the page.

The footage is now selected and ready for exporting.

Select the '**Film Strip**' icon from the tool bar (as detailed above). You will be presented with the screen below.

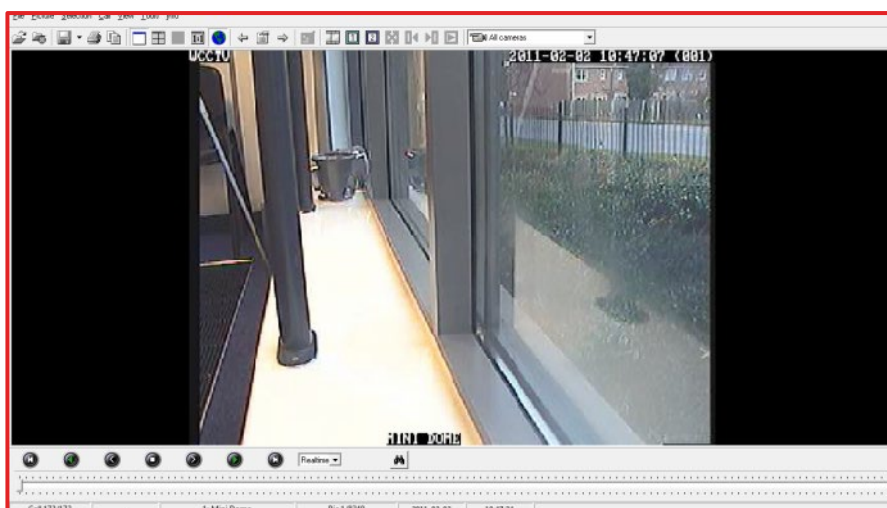


Select '**Export Archive (*.hpx)**' and also select '**Create self-playing archive**'. This format is better to use if you plan to use the evidence in a court of law. It makes the footage evidentially sound. The self-playing archive will allow you to play the footage on any computer that allows executable files to play. You won't have to have the WCCTV software installed.

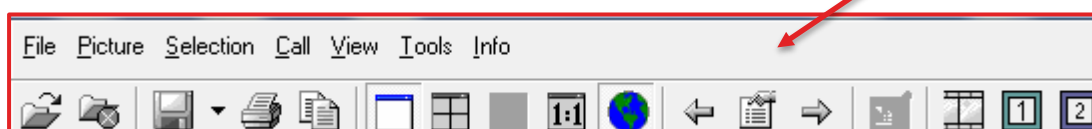
Once you've selected this, select '**Start Export**', which will ask you to choose a folder to save it in. Select your folder, and continue. The file will now export, and once it has finished you will be able to transfer it to a data disk or memory stick

13. How to Access Footage Using PC Archive (Reviewing Footage)

Return to the main screen of the software, from here you should be able to access 'PC Archive'. You should be presented with a screen similar to the one below.



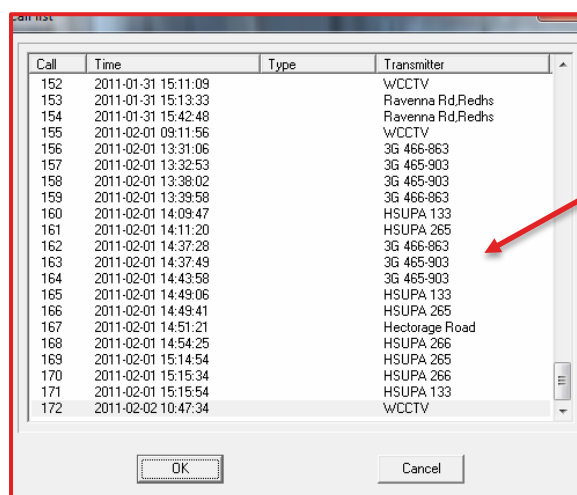
Call list icon



From here you will need to select the 'Call List' to bring up the files that have been recorded on to the PC's archive.

This will bring up a list of all the calls that have been made into the cameras. This will include live monitoring and instances where you have accessed site archive.

You will need to find the record you wish to use and review.



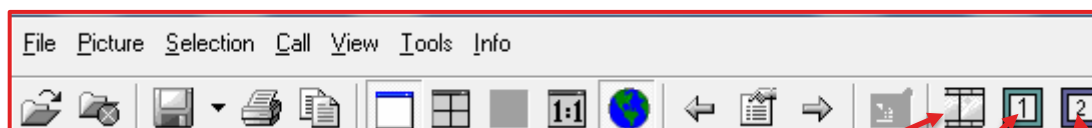
Call	Time	Type	Transmitter
152	2011-01-31 15:11:09		wCCTV
153	2011-01-31 15:13:33		Ravenna Rd.Redhs
154	2011-01-31 15:42:48		Ravenna Rd.Redhs
155	2011-02-01 09:11:56		wCCTV
156	2011-02-01 13:31:06		3G 466-863
157	2011-02-01 13:32:53		3G 465-903
158	2011-02-01 13:38:02		3G 465-903
159	2011-02-01 13:39:58		3G 466-863
160	2011-02-01 14:09:47		HSUPA 133
161	2011-02-01 14:11:20		HSUPA 265
162	2011-02-01 14:37:28		3G 466-863
163	2011-02-01 14:37:49		3G 465-903
164	2011-02-01 14:43:58		3G 465-903
165	2011-02-01 14:49:06		HSUPA 133
166	2011-02-01 14:49:41		HSUPA 265
167	2011-02-01 14:51:21		Hectorage Road
168	2011-02-01 14:54:25		HSUPA 266
169	2011-02-01 15:14:54		HSUPA 265
170	2011-02-01 15:15:34		HSUPA 266
171	2011-02-01 15:15:54		HSUPA 133
172	2011-02-02 10:47:34		wCCTV

List of calls made to the different cameras

Once selected, you will be able to move the grey slider along the bottom of the software to review different parts of the footage.

To export the footage from the software and make it available to other users, you will first need to select a start and end to the footage.

To do this you will need to select the start of the footage, and mark it using the number '1' symbol along the top task bar.



Film strip to start the export of the footage

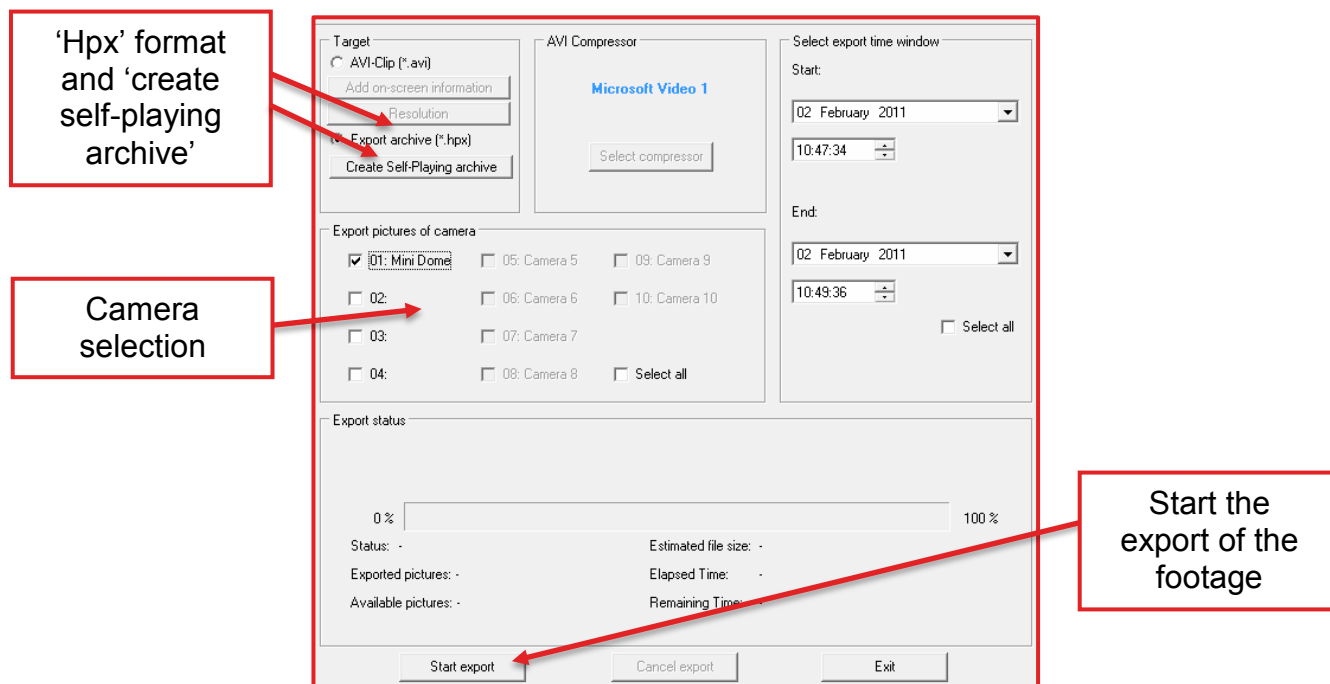
1 to mark the start of the footage

2 to mark the end of the footage

Select the ending of the footage, and to mark it select the number '2' symbol.

Now that you have selected the length of footage you need, it will need to be exported. To do this select the 'Film Strip' icon, which is detailed in the above diagram.

You will then be presented with this screen.



Here you will first need to select which camera it is your using as detailed above.

To make the file evidentially sound, it is always best to export the file in the 'hpx' format. This will not allow the images to be tampered with or changed.

You may also wish to check the box labelled 'Create Self-Playing Archive'. This will allow the footage to be packaged with its own media player, as the file will not open with any other media player. This makes it easier for other users to view the footage on their own laptops/PC.

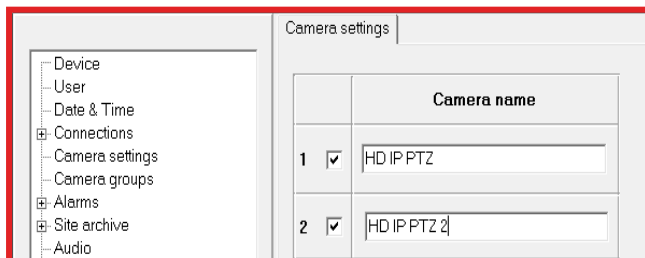
To start the export of the footage, you will need to select 'Start Export'. It will ask you to save the footage, choose a folder that you will be able to remember, and something that will be easy for you to find once the export is complete.

Once you've chosen this, and selected 'OK' the export will begin. Depending on how big the file is, it may take some time for it to export.

Once the export is complete, the file can be transferred on to removable media such as memory sticks and CD ROMs.

14. Adding Secondary Camera

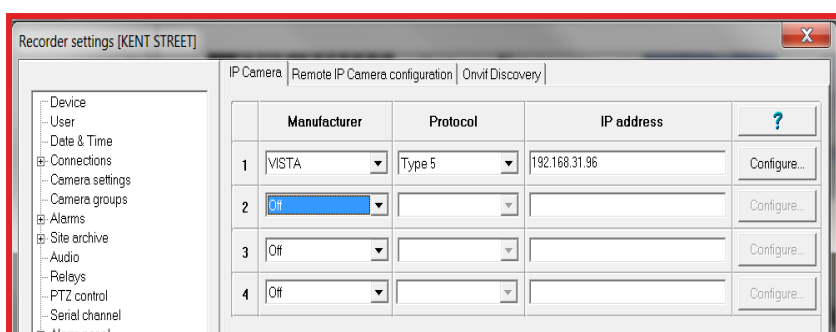
Secondary PTZ



Once connected to the camera, through the WCCTV Software – go to setup.

Then Select Camera Settings

Next select the next available camera, tick the box and enter camera name HD IP PTZ (next number)

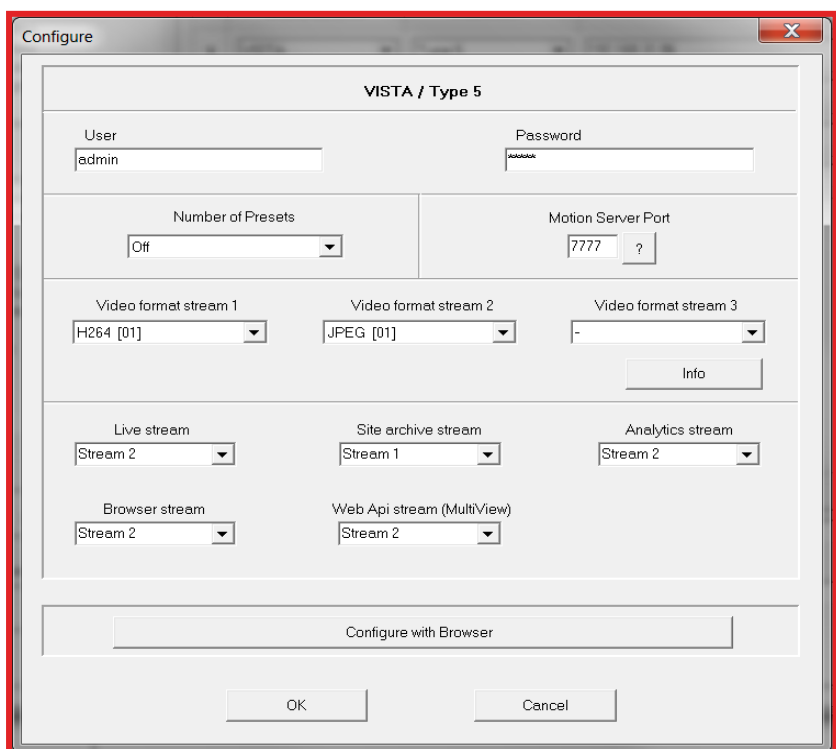


Then go to IP CAMERA

Select the next available camera and select:

Manufacturer – Vista
Protocol – Type 5
IP Address – 192.168.31.96

Then click **configure**



You will now need to **insert** the following options:

User – admin

Password – admin

Video Format Stream 1 – H264 [01]

Video Format Stream 2 – JPEG [01]

Live Stream – Stream 2

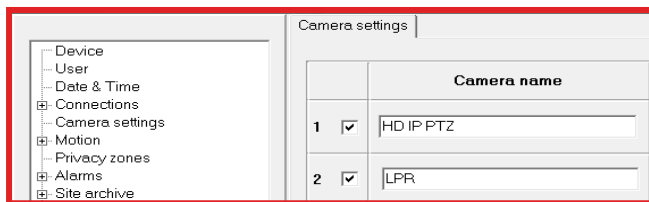
Site archive stream – Stream 1

Analytics Stream – Stream 2

Browser Stream – Stream 2

Web API Stream – Stream 2

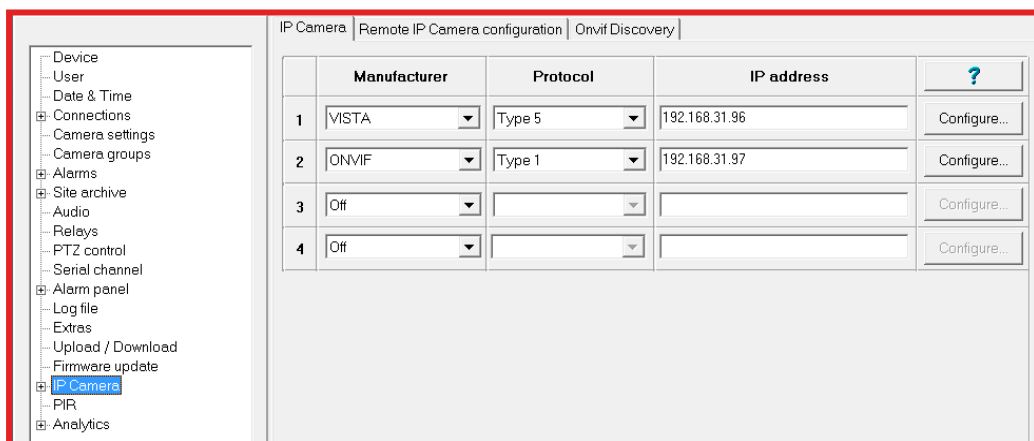
15. Adding LPR



Once connected to the camera, through the WCCTV Software – go to setup.

Then Select Camera Settings and select the next available camera, tick the box and enter camera name LPR

You will then need to select IP Camera and select the next available camera in the list, entering the following settings –



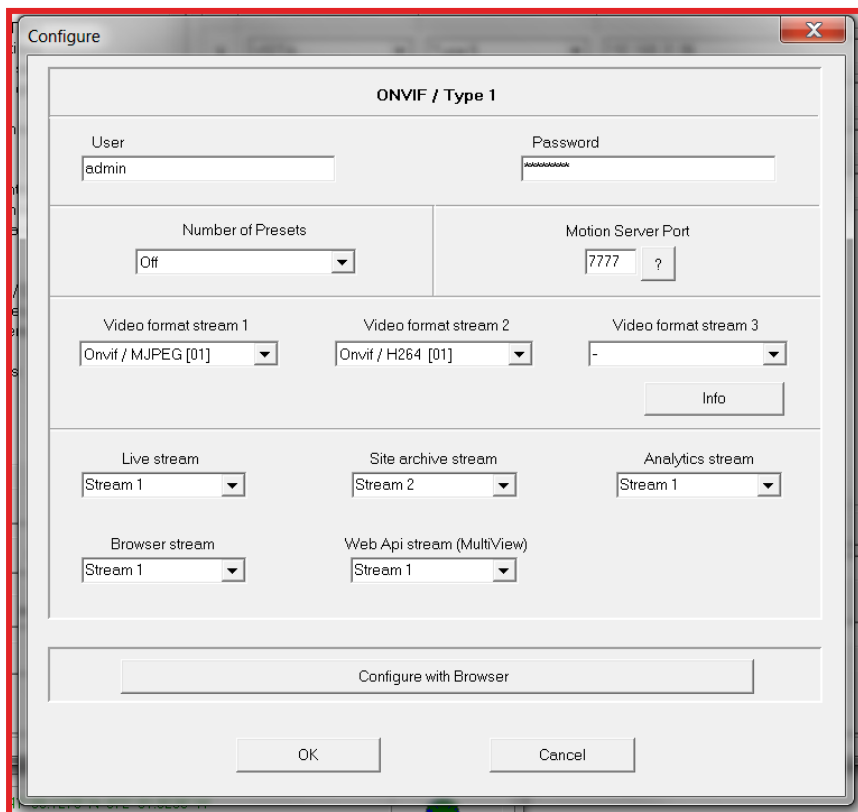
Manufacturer – ONVIF

Protocol – Type 1

IP Address - 192.168.31.97

THEN CLICK – Configure

You will then need to enter the below settings



Username - admin

Password – r0chdale

Video Format 1 – Onvif/MJPEG [01]

Video Format 2 – Onvif/H264 [01]

Live Stream – Stream 1

Site Archive Stream – Stream 2

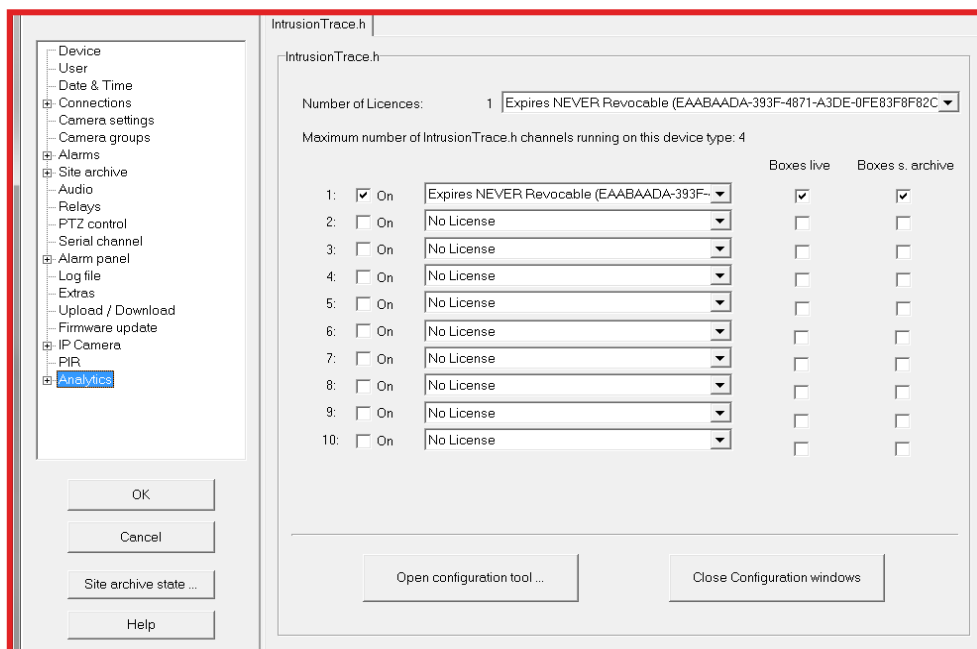
Analytics Stream – Stream 1

Browser Stream – Stream 1

Web Api Stream (MultiView) – Stream 1

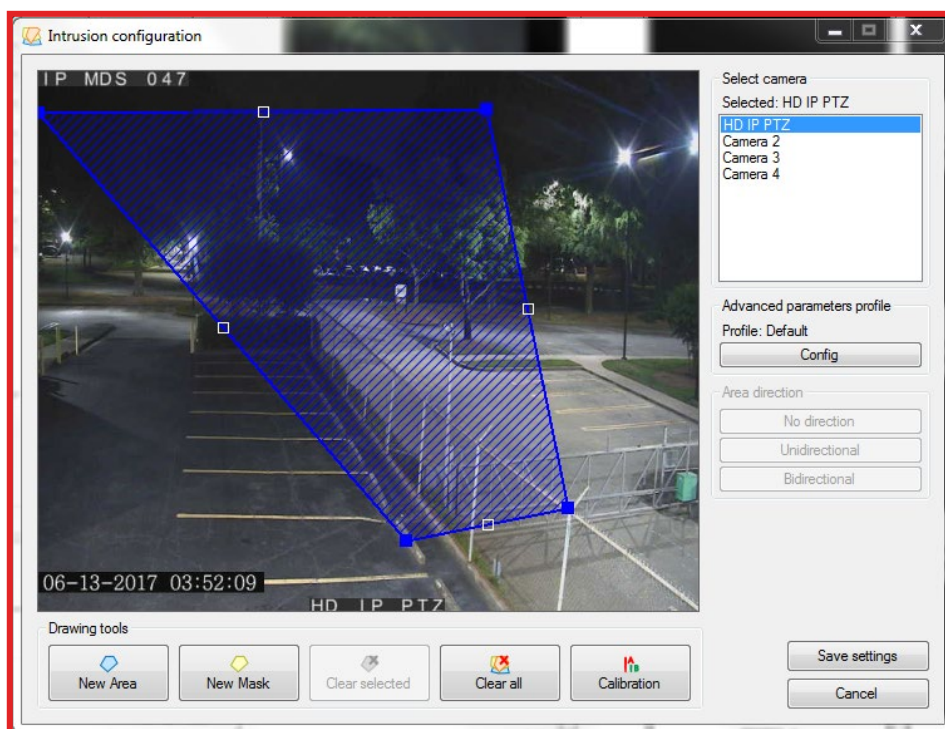
16. Analytics

Now navigate to Analytics in the setup menu and click open configuration tool



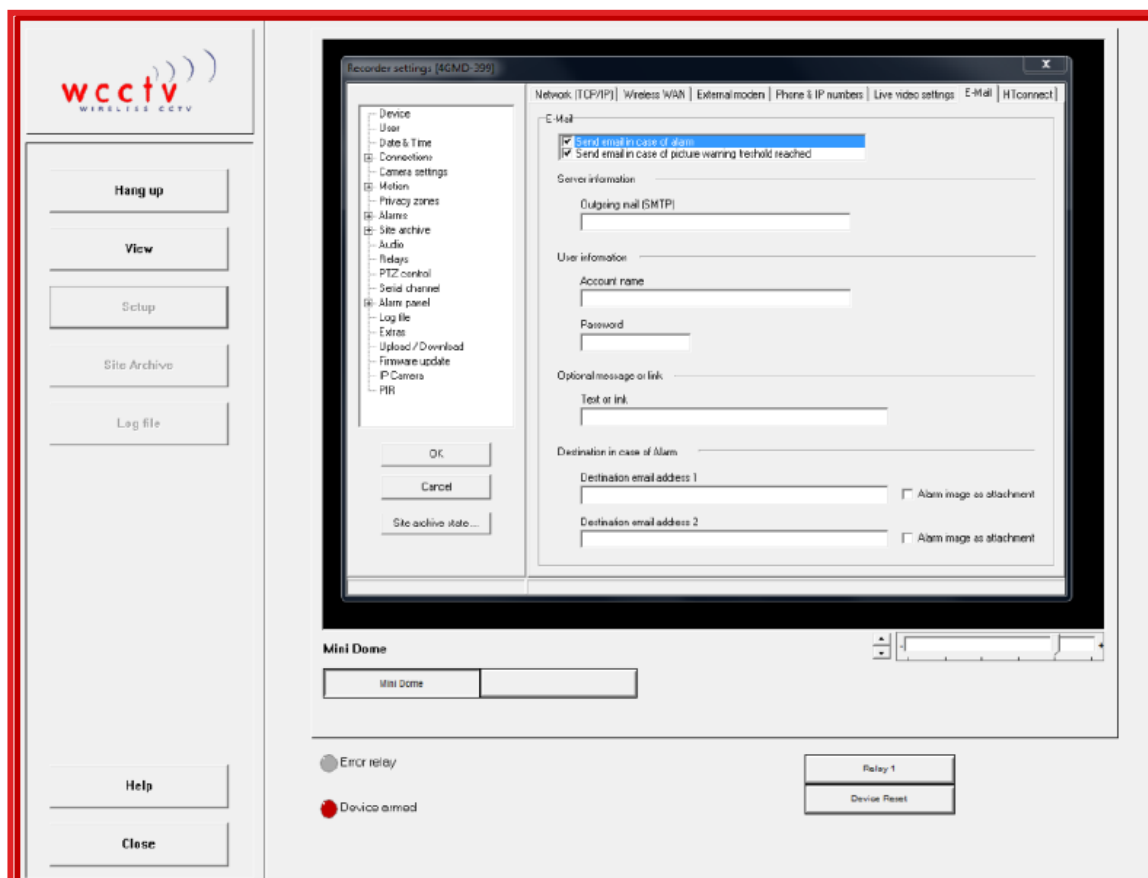
Once opened you will see the following screen, Double click on HD IP PTZ and set the zone.

Select New Area and click on the main image display setting each of the reference points and drawing the shape as below.



17. Email Alerts

Once dialed into the camera click setup, connections then select the email tab and check the options required...



Now enter the following details...

Outgoing Mail (SMTP) – mail.wcctvalarms.com

Account Name – alarms@wcctvalarms.com

Password – c0ff3312

Optional Message or Link – This is usually set to camera serial number or name

Then enter the email address that you want to alert and select if you would like a screenshot emailing as well.

Now all the details have been entered click OK and check the Save as configuration profile box and click OK again...

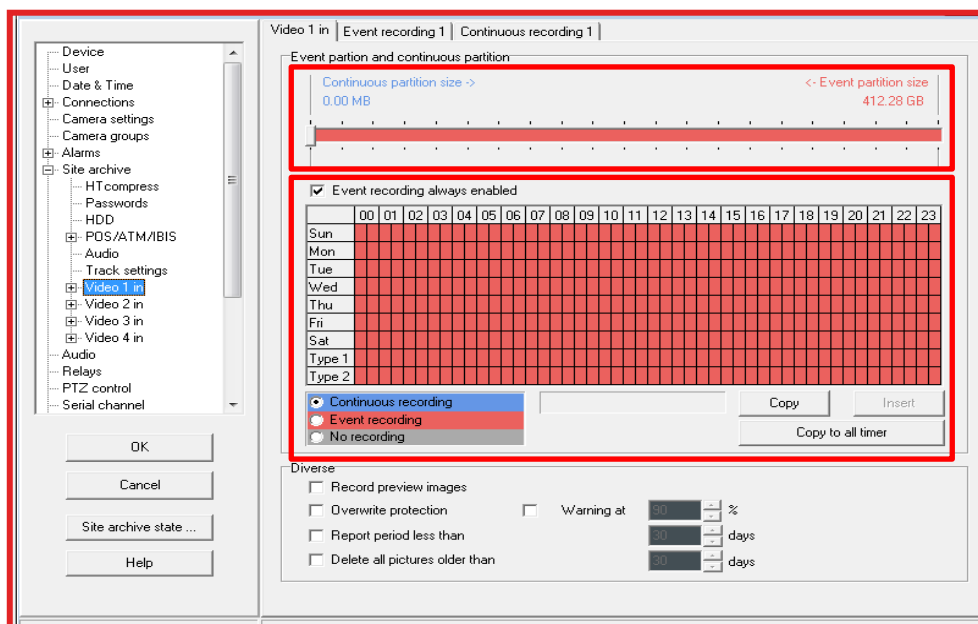
18. Advanced Analytics

Continuous and Event Recording Set up

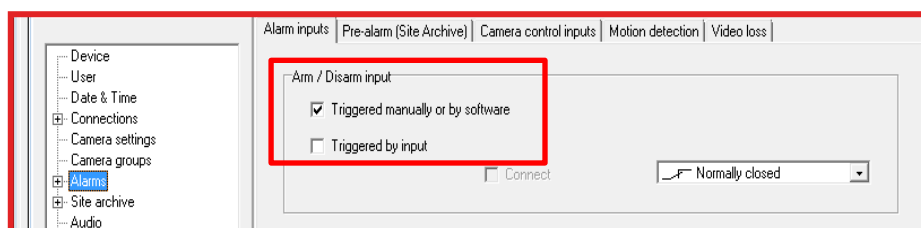
Go to Setup and then **select** Site Archive > ensure track settings are split equally across the number of camera inputs present. (Either 1/2/3 or 4 Inputs)



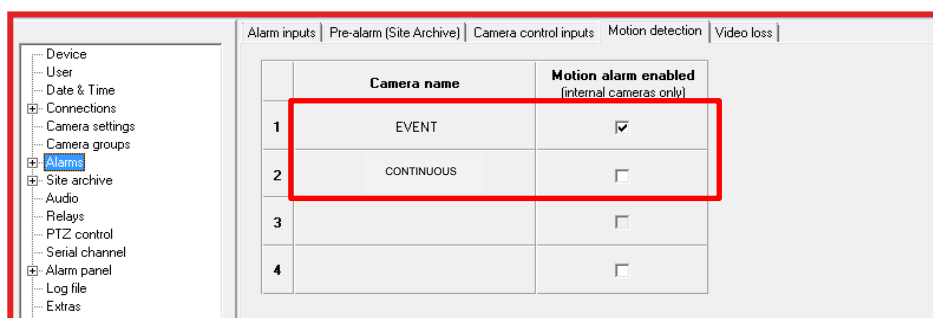
Following that expand the Site archive tab using the + icon and go to Video 1 in > ensure settings are as below.



Go to Setup Alarms > Alarms inputs > ensure Triggered manually or by software is ticked.



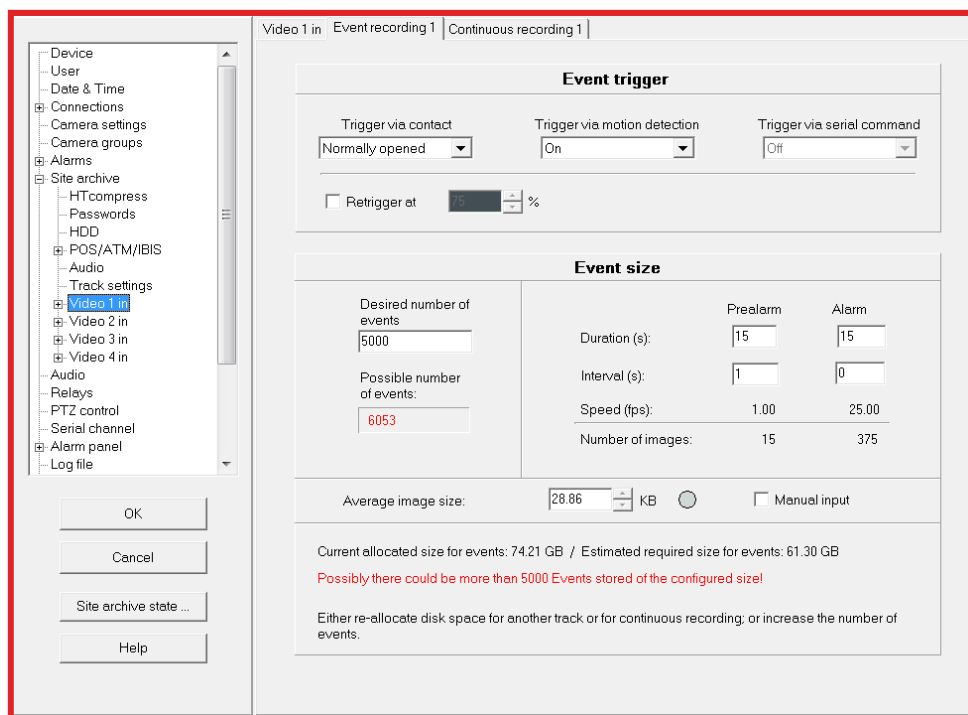
Then Select Alarms - navigate to Motion Detection and ensure Event is ticked.



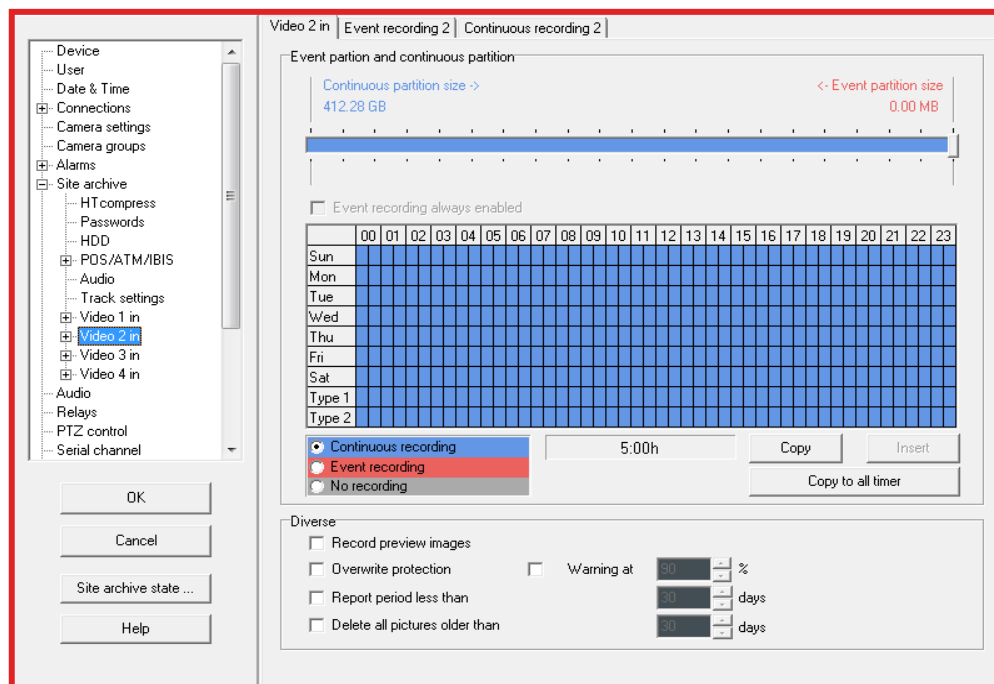
Next, Go to the Event Recording 1 Tab – and make sure the following settings are entered –

Ensure Trigger via contact is ON

Ensure Trigger via motion detection is ON

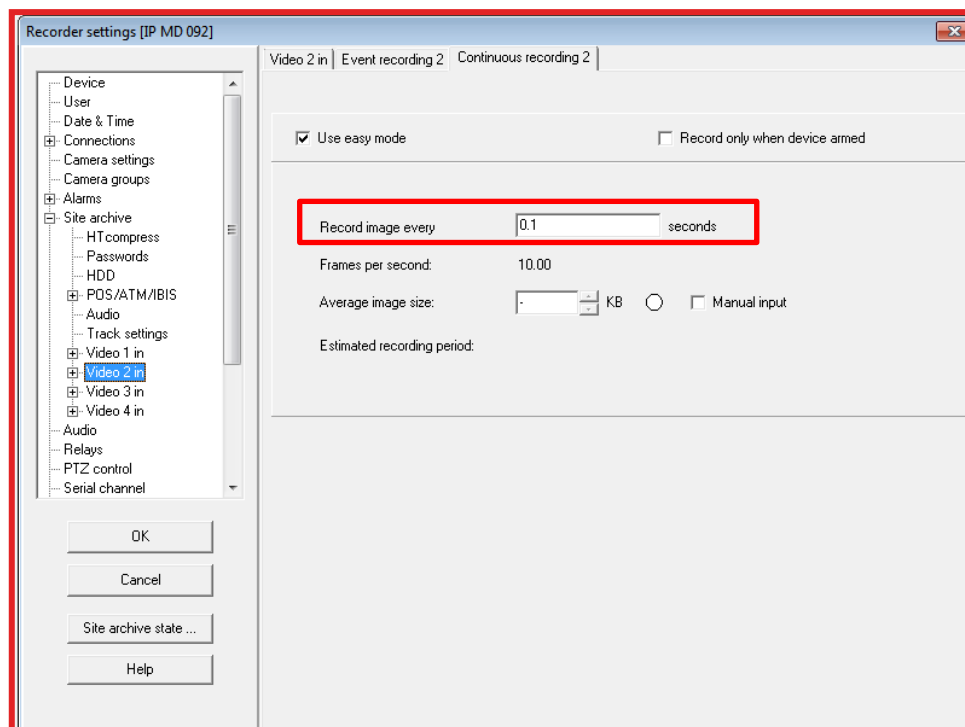


Select - Go to Video 2 in – Check that continuous recording is selected



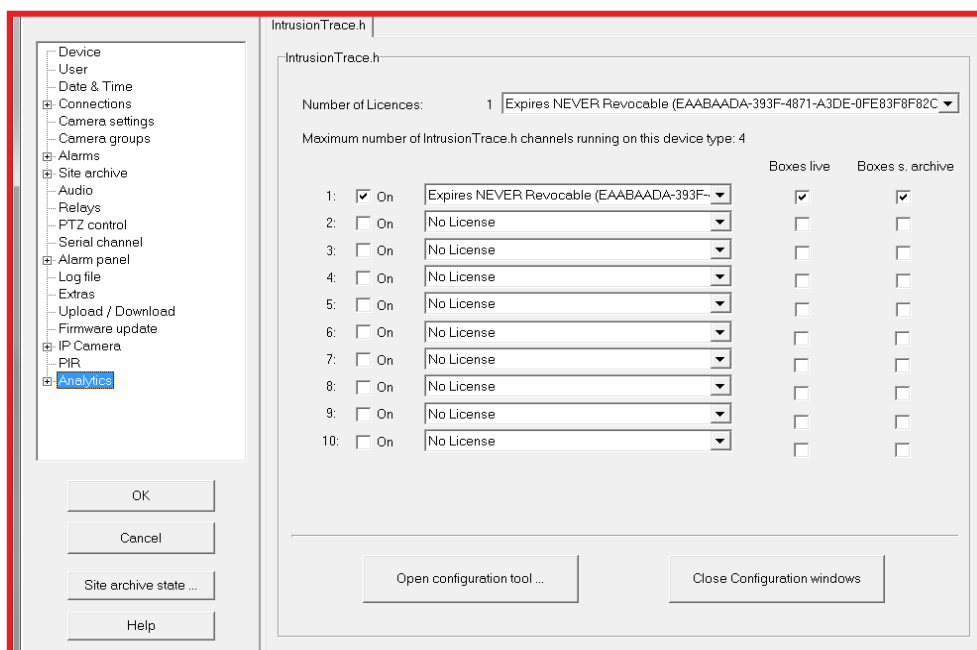
Next go to Continuous recording tab and you have the ability to adjust the frame rate per second.

Record image Every 0.1 Seconds – 10 Frames Per Second
Every 0 Seconds – 25 Frames Per Second



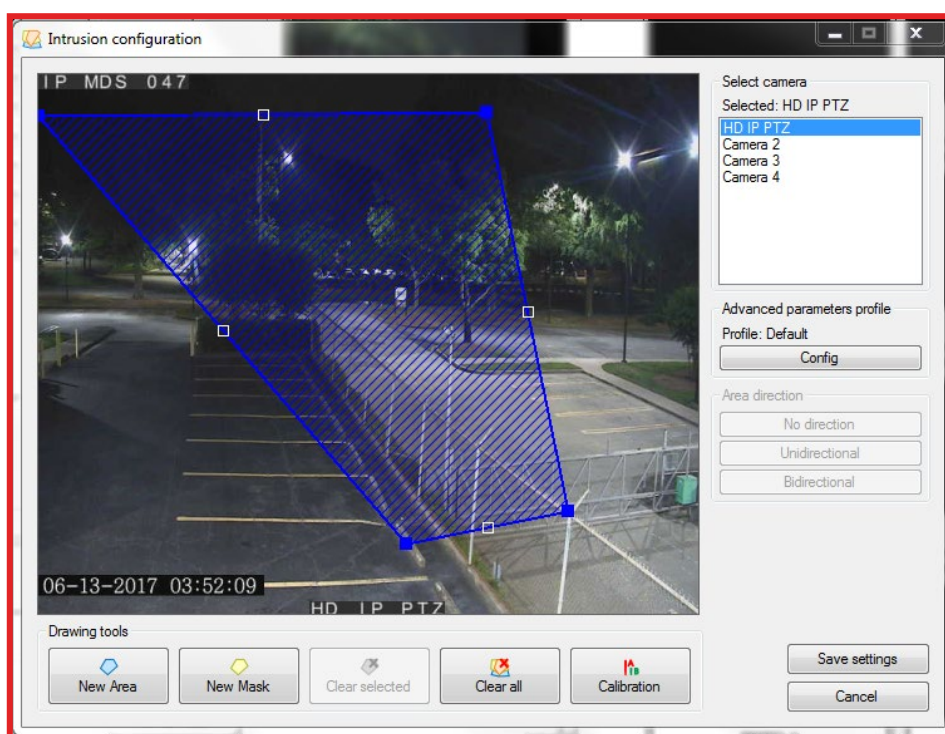
Setting Zones

Now navigate to Analytics in the setup menu and click open configuration tool



Once opened you will see the following screen, Double click on HD IP PTZ and set the zone.

Select New Area and click on the main image display setting each of the reference points and drawing the shape as below.



Calibration

Ensure character sizing has been set. Go to Calibration > **Height A**



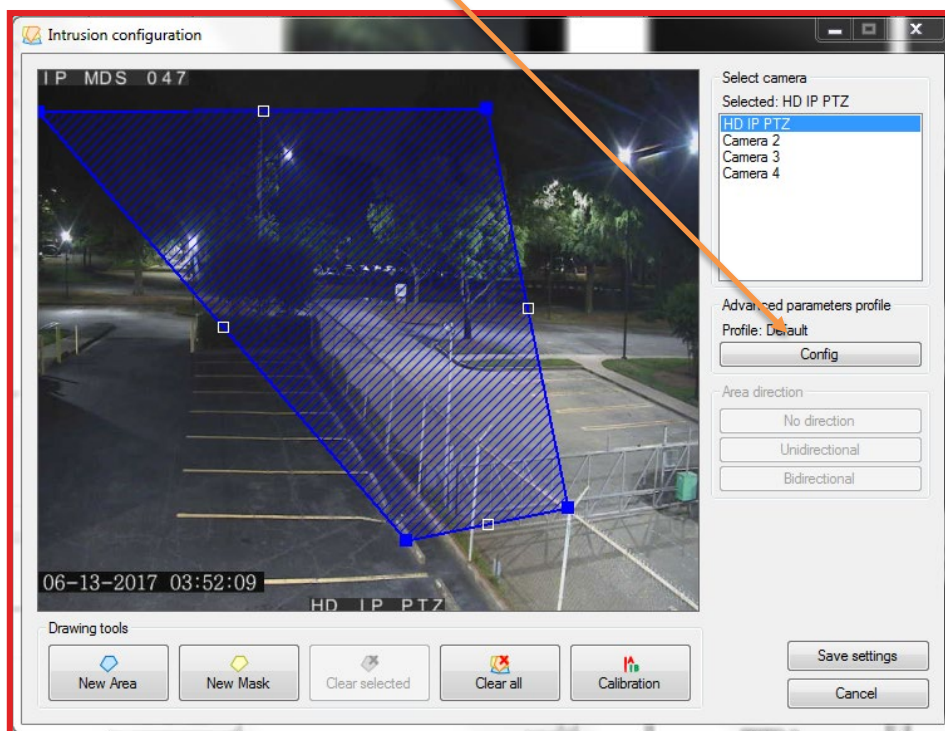
This can be calibrated using a number of references.

A person – can be utilized – Changing the height of the object depending on your available options. In the image a car was utilized to as a reference point.

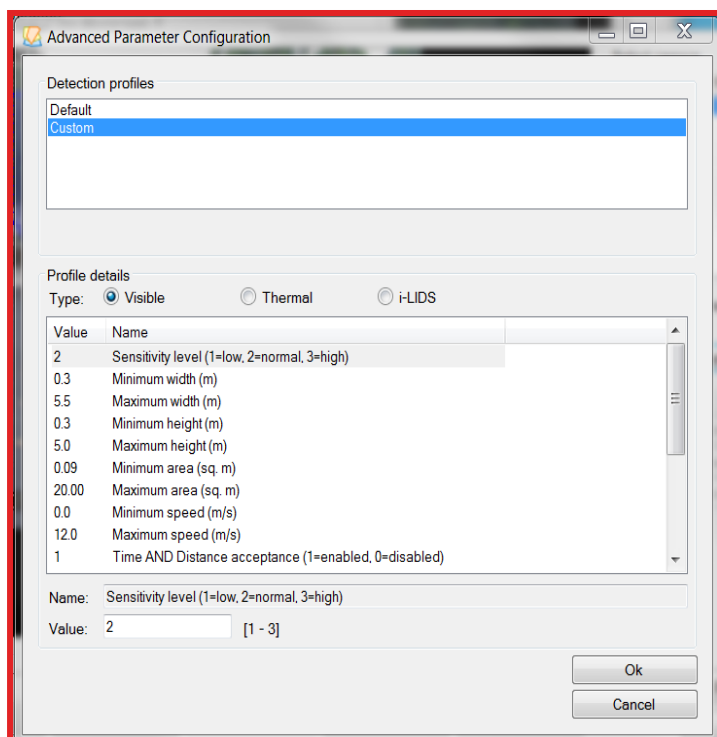
Height B needs to be set at the back of the live image (Utilizing a reference point and adjusting the height of the object)



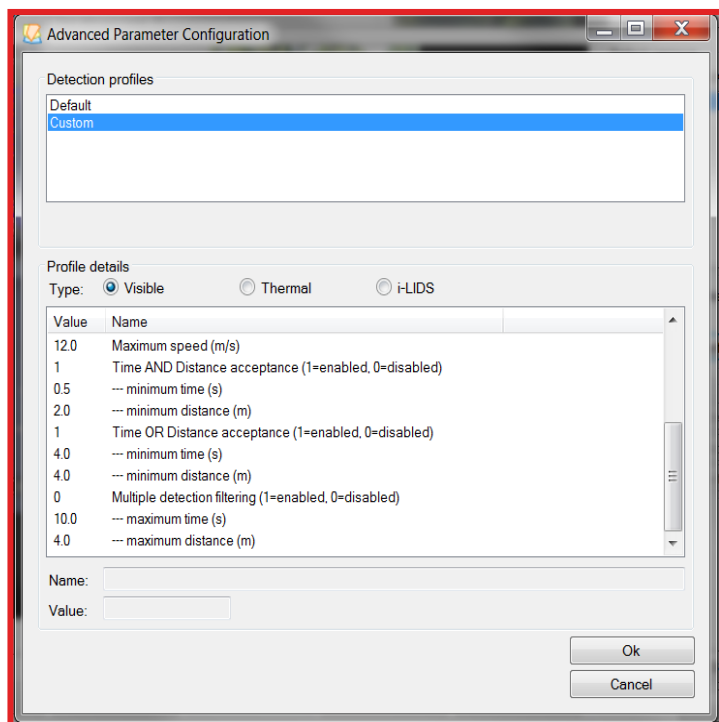
Within the Configuration tool – select Config



Once selected you will need to change detection profiles to Custom, Below is a summary of each of the options and information with regards to adjusting.



Sensitivity Level = 1 - (Low) or 2 - (Medium) or 3 - (High)
Minimum Width = Minimum width of subject size (m)
Maximum Width = Maximum width of subject size (m)
Minimum Height = Minimum height of subject size (m)
Maximum Height = Maximum height of subject size (m)
Minimum Sq. area = Minimum of available subject area (SQ.m)
Maximum Sq. area = Maximum of available subject area (SQ.m)
Minimum Speed = Minimum Speed of subject entering area which will be detected (m/s)
Maximum Speed = Maximum Speed of subject entering area which will be detected (m/s)



Time AND Distance acceptance = Enabled (1) Disabled (0)

This enables/disables the functionality of Zone (**both time and distance combined in detection zone**)

Minimum Time (s) = minimum time in detection zone before alert triggers

Minimum Distance (m) = minimum distance in detection zone before alert triggers

Time OR Distance = Enabled (1) Disabled (0)

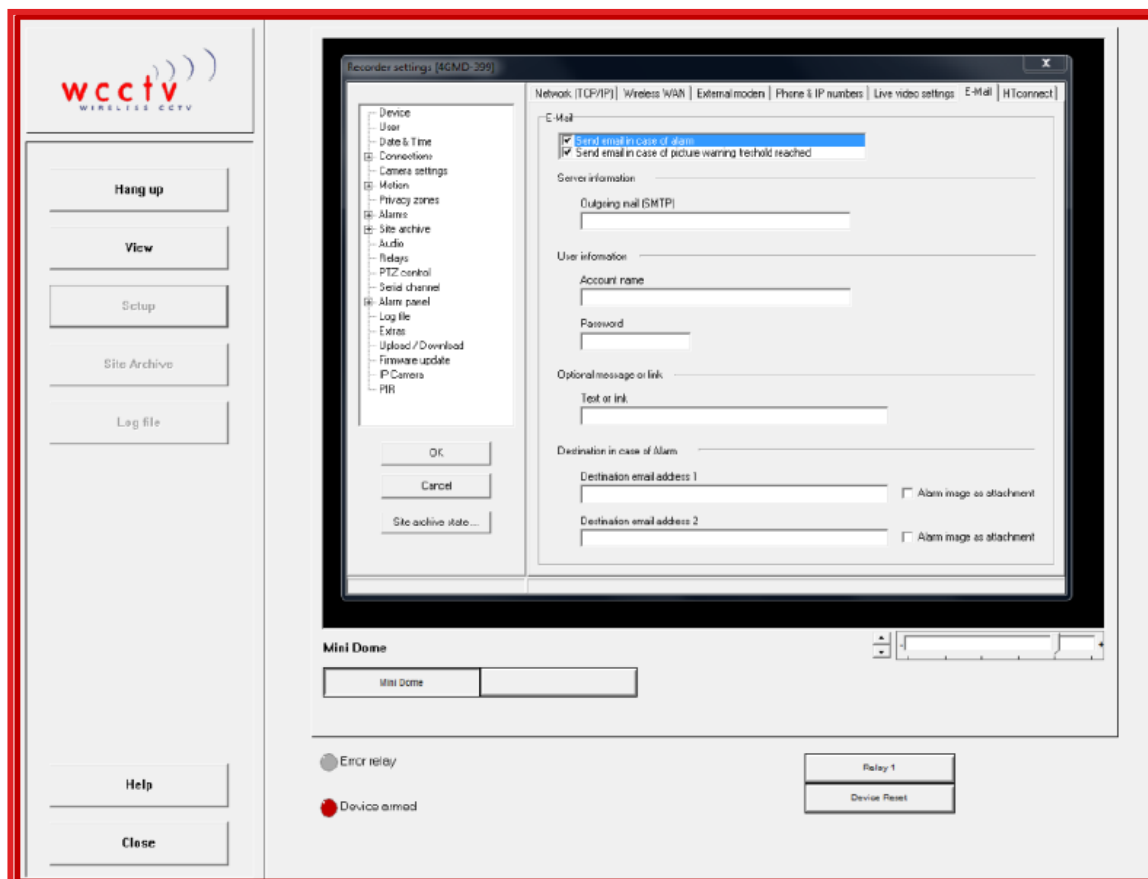
This enables/disables the functionality of Zone (**time OR distance in detection zone**)

Minimum Time (s) = minimum Time in Zone before triggering alarm

Minimum Distance = Minimum distance in detection zone before alert triggers

Email Alerts

Once dialed into the camera click setup, connections then select the email tab and check the options required...



Now enter the following details...

Outgoing Mail (SMTP) – mail.wcctvalarms.com

Account Name – alarms@wcctvalarms.com

Password – c0ff3312

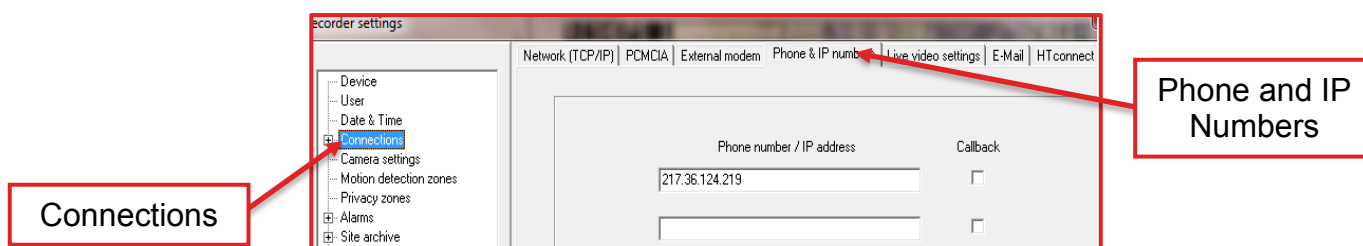
Optional Message or Link – This is usually set to camera serial number or name

Then enter the email address that you want to alert and select if you would like a screenshot emailing as well.

Now all the details have been entered click OK and check the Save as configuration profile box and click OK again...

Alarming Back To Static IP

In setup, select 'connections' from the menu.



Select '**Phone & IP numbers**'.

In the top box you will need to put your static IP address in e.g. 172.17.1.37

Select '**HTconnect**' from the end of the tabs in the connection menu.

In '**HTconnect**' you will see your computers IP address with a tick box next to it. Put a tick in the box.



Select '**OK**' from the left hand side, and make sure you select '**Save as configuration profile**'.